

ARTISTICA
— HOME —



— SIGNATURE DESIGNS —



ARTISTICA

— HOME —

SIGNATURE DESIGNS

Welcome to the Artistica Home portfolio, showcasing extraordinary silhouettes in our Signature Designs assortment. The Signature Designs collection encompasses a remarkable range of original home furnishings designs that blend unique and exotic materials with distinctive custom finishes. Materials are critical because they infuse each design with character, along with a bespoke sense of customization. From the authenticity of rare minerals, natural stone and fossilized shell designs, to the esoteric look of snakeskin, acrylic and hand-painted Eglomise, silhouettes in the Signature Designs portfolio are crafted to make a dramatic statement of personal style.

At Artistica Home, we believe that exceptional furniture design is a creative art. Our passion for innovation is grounded in the belief that your home is the ultimate reflection of personal style. As a result, the Artistica portfolio features original designs that are carefully curated and decidedly chic. The brand aesthetic has, at its foundation, three creative imperatives - an eye for timeless historical references, a relentless pursuit of unique materials, and a commitment to artisan craftsmanship and finishes.



SIGNATURE DESIGNS

An eclectic mix of striking original designs for every room of the home, many utilizing a range of unusual and exotic materials.

Including:

- Dining Tables
- Spot Tables
- Chairs & Stools
- Media Consoles
- Occasional

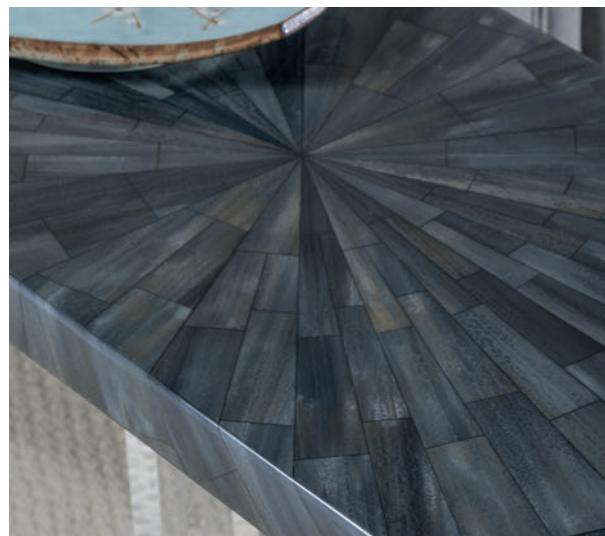
SIGNATURE DESIGNS

A wide range of original designs for every room of the home, featuring mixed media and stunning unique finishes

SIGNATURE DESIGNS - TABLE OF CONTENTS

Product listing by category

Unusual and sometimes rare materials are utilized in this collection to achieve our unique designs. For additional information about specific materials, please see pages 278-279 before ordering.



DINING & STOOLS	6
2023 WHITE CRYSTAL.....	30
2036 TRUNK SEGMENT GOLD.....	33
2037 TRUNK SEGMENT SILVER.....	18
2041 CITYSCAPE.....	5
2042 CASANOVA.....	23
2080 GRETA.....	20
2085 ITERATION.....	34
2086 RILEY.....	10
2087 MELODY.....	27
2089 RACONTEUR.....	36
2101 ARNE.....	16
2102 VIGGO.....	42
2104 BEALE.....	38
2106 FUENTE.....	15
2146 RILEY.....	12
2155 CAPIZ.....	28
2158 HELLER.....	8
2161 RAINER.....	13
2201 JULIET.....	9

MEDIA CONSOLES & HALL CHESTS	45
2025 MERCURY.....	92
2055 CREDO.....	96
2117 CHIAVARI.....	104
2119 GRADIENT.....	56
2140 ZEITGEIST WHITE.....	72
2141 ZEITGEIST LINEN.....	80
2149 LOGAN.....	52
2150 MONSTUART.....	90
2202 ASCENSION.....	102
2203 IRIDIUM.....	70
2205 INVICTA.....	62
2208 METAPHOR.....	46
2212 VISCOUNT.....	100
2268 ELATION GREY.....	65
2268 ELATION WHITE.....	66

OCCASIONAL & ETAGERES	106
2022 COLETTE.....	167
2023 WHITE CRYSTAL.....	154
2024 CUMULUS.....	148
2025 MERCURY.....	92
2035 MASTERSON.....	213
2041 CITYSCAPE.....	164
2050 GRAVITAS.....	136
2060 IMPRESARIO.....	156
2077 PRECEPT.....	220
2080 GRETA.....	202
2097 ZEPHYR.....	206
2117 CHIAVARI.....	228
2120 DALLIANCE.....	176
2121 LILT.....	234
2128 SOREE.....	182
2129 CORTONA.....	224
2132 CIRRO.....	198
2135 TOPA.....	208
2141 ZEITGEIST LINEN.....	172
2145 ARISTO.....	200
2154 ALFIE.....	192
2155 CAPIZ.....	140
2156 CUMULUS CAPIZ.....	142
2157 MARLOWE.....	232
2158 HELLER.....	190
2173 BRILLIANTE.....	132
2174 TREVILLE.....	224
2181 APRICITY.....	159
2202 ASCENSION.....	120
2203 IRIDIUM.....	108
2204 METROPOLE.....	126
2208 METAPHOR.....	169
2210 FORAY.....	214
2211 ACCOLADE.....	216
2213 SASHAY SILVER.....	178
2214 SASHAY GOLD.....	160
2241 CANTO.....	212
2250 EVEREST.....	194
2268 ELATION GREY.....	112
2268 ELATION WHITE.....	115

ACCENTS & SPOT TABLES	236
2036 TRUNK SEGMENTS GOLD.....	250
2037 TRUNK SEGMENTS SILVER.....	251
2025 MERCURY.....	275
2028 TETON.....	256
2030 GREGORY.....	254
2030 TATE.....	254
2030 FRICK.....	255
2032 CAMEO.....	257
2033 BARITO.....	260
2035 SHANE.....	257
2035 SPEC.....	258
2035 VALANCE.....	258
2035 KANE.....	259
2035 WYATT.....	259
2053 SERGIO.....	252
2054 ZORBA.....	256
2063 CALYPSO.....	252
2064 SULU.....	254
2066 CORRINA.....	253
2067 LEO.....	248
2127 ISABELLA.....	264
2133 DEMETRIA.....	266
2134 ISIDORA.....	253
2159 OTTO.....	248
2176 HUXLEY.....	240
2177 MORIARTY.....	241
2178 PASCAL.....	241
2179 CLEMENT.....	243
2180 CATALAN.....	242
2182 BORA BLACK RESIN.....	262
2183 BORA WHITE RESIN.....	263
2184 CLARENCE.....	244
2185 MICHEL.....	246
2186 REPARTEE.....	246
2189 MIMI.....	247
2190 SALVO.....	247
2205 INVICTA.....	238
2206 TOUCHE.....	238
2207 LITMUS.....	238
2243 BELLO.....	239
2247 THORNTON.....	243
2248 VEGA.....	245
2249 BAROLO.....	242
2250 EVEREST.....	194
2251 WILDER.....	244
2252 MONTREAUX.....	240
2253 ERGO.....	245

DESKS	268
2024 CUMULUS.....	272
2025 MERCURY.....	275
2055 CREDO.....	274
2062 PENELOPE.....	276
2156 CUMULUS CAPIZ.....	270



DINING ROOM AND STOOLS

SIGNATURE DESIGNS - DINING ROOM AND STOOLS

A range of stunning original designs to enhance the everyday dining experience



Our dining and stool collections cover a wide range of style categories and are marked by our continued use of unusual materials, textures and finishes.

SIGNATURE DESIGNS - 2158 SERIES/HELLER

Crafted from Mahogany solids and veneers in a rich white wirebrushed and rubbed finish, hand casted Scagliola stone bases with polished aluminum insets



Our Heller series features Scagliola stone panels hand-poured in a random pattern to imitate clouds, formed over an iron interior structure and offset by applied polished aluminum and a thick Mahogany slab top in a complex wire brushed finish based on a Swedish antique. Our shapely Juliet arm chairs are a perfect compliment as shown here in Lexington special order fabric 2204-31 and on the next page in the standard performance fabric.

SIGNATURE DESIGNS - 2158 SERIES/HELLER

Crafted from Mahogany solids and veneers in a rich white wirebrushed and rubbed finish, hand casted Scagliola stone bases with polished aluminum insets



2158-877C Heller Rectangular Dining Table
100W x 48D x 30H in.

Scagliola stone dates to the Italian Renaissance and was originally developed as a structural substitute for large architectural forms typically built in marble. It combines selenite and a variety of marble and stone "dusts" to form a strong, beautiful surface. Each piece or top is created by hand by skilled artisans and will vary in appearance from piece to piece.

SIGNATURE DESIGNS - 2201 SERIES/JULIET

Sculptural transitional design with casters



2201-881-01 Juliet Arm Chair with Casters
24.25W x 28D x 41H in.
Arm 25H in.
Seat 20W x 19D x 19H in.
Standard in performance fabric 221111
Also available in Special Order fabrics, leathers and COM.

SIGNATURE DESIGNS - 2158 SERIES/HELLER

Crafted from Mahogany solids and veneers in a rich white wirebrushed and rubbed finish, hand casted Scagliola stone bases with polished aluminum insets



Heller Round Dining, above, paired with our Riley Arm Chair in Lexington special order fabric 0125-31 and backed by our Metaphor Long Media Console, pgs. 48-49.



2158-870-60C Heller Round Dining Table
60 diameter x 30H in.

Also available:
2158-870-56C Heller Round Dining Table
56 diameter x 30H in.



SIGNATURE DESIGNS - 2086 SERIES/RILEY

Solid mahogany frame, fully upholstered



2086-881-01 Riley Arm Chair
25W x 26.5D x 38H in.
Arm 25H in.
Seat 19W x 19D x 19H in.
Standard in fabric 153713
Also available in Special Order fabrics, leathers and COM.



2086-881 Riley Arm Chair
25W x 26.5D x 38H in.
Arm 25H in.
Seat 19W x 19D x 19H in.
Standard in fabric 153713
Also available in Special Order fabrics, leathers and COM.

Shown here and on opposite page in Special Order fabric 0125-31

SIGNATURE DESIGNS - 2146 SERIES/RILEY WOVEN

Woven outer back and sides in woven cane in a white gray finish, with upholstered inner back and seat, casters



Our most popular and versatile chair design is now available with an outback in woven caning. The Riley's sleek transitional design is apropos in a wide variety of settings, and the smooth casters add comfort and functionality.

**2146-881-01
Riley Woven Arm Chair**

25W x 26.5D x 38H in.
Arm 25H in.
Seat 19W x 19D x 19H in.
Standard fabric 223571
Also available in Special Order fabrics,
leathers and COM.



SIGNATURE DESIGNS - 2161 SERIES/RAINER

Veneered natural gypsum base, glass top



The Rainer's dramatic trapezoidal pedestal is clad in shimmering gypsum and serves as a versatile design statement in a variety of configurations. It is shown above with a 60" top. Shown below with a 56" glass top. See page 14 for the Rainer Double Pedestal Dining Table using an 88 x 48" rectangular glass top. *Shown here with our Riley Arm Chairs see page 111.*



**2161-870-56C Rainer Round Dining Table
with Glass Top**
56 diameter x 29.5H in.

SIGNATURE DESIGNS - 2161 SERIES/RAINER

Veneered natural gypsum base, glass top



The architectural beauty of our Rainer pedestals are created with tessellated gypsum inlaid onto a reinforced iron frame. *Gypsum is a product of nature and varies greatly in appearance from tile to tile; no two pieces will be exactly alike.*



**2161-870-88C Rainer
Rectangular Dining Table
with Glass Top**
88W x 48D x 29.75H in.

SIGNATURE DESIGNS - 2106 SERIES/FUENTE

Transitional designs crafted from select hardwoods with white oak veneer in our Cerused White Gray finish
Finish standard on series 2101, 2105, 2106, 2119, 2120, 2140 and 2149

**2106-895-01 Fuente
Swivel Counter Stool**
27.75W x 21.75D x 32.75H in.
Seat 19W x 18.5D x 24.5H in.
Standard fabric 223571
Also available in Special Order fabrics,
leathers and COM.



**2106-896-01 Fuente
Swivel Barstool**
27.75W x 21.75D x 38.75H in.
Seat 19W x 18.5D x 30.5H in.
Standard fabric 223571
Also available in Special Order fabrics,
leathers and COM.

SIGNATURE DESIGNS - 2101 SERIES/ARNE

Contemporary designs crafted from mahogany solids in Cerused White Gray finish, with complementing cane in a white finish



**2101-896-01
Arne Barstool**
25W x 25.5D x 42H in.
Seat 22W x 19D x 30H in.
Standard fabric 430371
Also available in Special Order fabrics,
leathers and COM.



SIGNATURE DESIGNS - 2101 SERIES/ARNE

Contemporary designs crafted from mahogany solids in Cerused White Gray finish, with complementing cane in a white finish



**2101-898-01
Arne Low Back Barstool**
21.5W x 22.5D x 34H in.
Seat 19.75W x 19D x 30H in.
Standard fabric 430371
Also available in Special Order fabrics,
leathers and COM.



**2101-895-01
Arne Counter Stool**
25W x 25.5D x 36H in.
Seat 22W x 19D x 24H in.
Standard fabric 430371
Also available in Special Order fabrics,
leathers and COM.



**2101-897-01
Arne Low Back
Counter Stool**
21.5W x 22.5D x 28H in.
Seat 19.75W x 19D x 24H in.
Standard fabric 430371
Also available in Special Order fabrics,
leathers and COM.

SIGNATURE DESIGNS - 2041 SERIES/CITYSCAPE

Contemporary asymmetrical designs crafted from stainless steel and brass



Our stunning Cityscape silhouettes are remarkable achievements in metalwork intended to evoke the emotion of great skylines and city views. They are built completely in stainless steel, with select elements electro-formed in a warm, vintage brass and completed with 3/4" thick polished edge glass tops. Please see pgs. 278-279 for important information regarding stainless steel and polished metal finishes.

SIGNATURE DESIGNS - 2041 SERIES/CITYSCAPE

Contemporary asymmetrical designs crafted from stainless steel and brass



2041-870-60C
Cityscape Dining Table
with Glass Top
60 inch diameter x 30.25H in.
Cityscape occasional, pg. 164

SIGNATURE DESIGNS - 2080 SERIES/GRETA

Modern drum table in veneered white onyx with metal plinth



Our eclectic range of dining tables are designed to work with an assortment of our dining chairs. The Greta features white onyx veneered onto a drum base, while the Crystal Stone Dining Table sees white fossilized stone inset into a Deco-era iron base leafed in gold foil. Please see pgs. 278-279 for important information regarding marbles and fossilized stone surfaces. Also shown is the Melody Side Chair.

SIGNATURE DESIGNS - 2080 SERIES/GRETA

Modern drum table in veneered white onyx with metal plinth



2080-870-56C
Greta Dining Table
with Glass Top
56 inch diameter x 30H in.



Like its namesake, the Casanova Dining Table seduces, boasting a graceful iron tulip base electro-formed in a warm vintage brass coloration, and a striking top in engineered ebony veneers. It is an apt companion to our shapely Melody Side Chairs (pg. 27) in our warm silver leaf finish. Please see pgs. 278-279 for important information regarding polished metal and silver leaf finishes. Casanova Sideboard 2044-869C shown in background.



2042-870C Casanova Round Dining Table
54 diameter x 29.5H in.



2044-869C
Casanova Sideboard
68W x 18D x 36H in.



These stunning, early Mid-Century Modern silhouettes seduce the room with their dark and exotic engineered ebony veneers juxtaposed against bases in stainless steel electroformed in a warm, vintage brass coloration, with unique complimentary three-piece hardware. All pieces feature soft-close hinges and drawer guides, and the bar cabinet includes an LED light and mirrored back panel. Also shown is the Casanova Dining Table and Melody Side Chair. *The dining table can also be seen on pages 22 and 23.*



**2043-961C Casanova
Bar Cabinet**
36W x 18D x 58H in.



**2087-880-01
Melody Side Chair**
22W x 24.75D x 37.5H in.
Seat 20W x 19D x 19.5H in.
Standard fabric 153711
Also available in Special Order fabrics,
leathers and COM.



**2087-895-01
Melody Counter Stool**
22W x 24.25D x 40.5H in.
Seat 21W x 21D x 24H in.
Standard fabric 153711
Also available in Special Order fabrics,
leathers and COM.

SIGNATURE DESIGNS - 2155 SERIES/CAPIZ PEDESTAL

Hand forged iron bases in a champagne foil finish and capiz shell tops inlaid in a starburst pattern



SIGNATURE DESIGNS - 2155 SERIES/CAPIZ PEDESTAL

Hand forged iron bases in a champagne foil finish and capiz shell tops inlaid in a starburst pattern



The 2155 Capiz Pedestal series is also available as the 2023 series in a White Crystal Stone and gold foil combination. Please see pages 30 and 31.

2155-870C Capiz Pedestal Round Dining Table
48 diameter x 30H in.



2023-870C
Crystal Stone
Round Dining Table
48 diameter x 30H in.
Crystal Stone occasional, pgs. 150-151



Appropriate for both formal and more casual settings, the Crystal Stone Round Dining Table offers Art Deco era bases in hand forged iron and gilded in a bright gold foil finish, offset by iridescent white crystal stone tops with a concentric inlay pattern. The same silhouette is available in the preceding pages, dressed in a stunning Capiz shell top with Champagne foil finish. For companion occasional pieces, please see pages 154-155 (White Crystal Stone) and 142-147 (Cumulus Capiz).

SIGNATURE DESIGNS - 2036 SERIES/TRUNK SEGMENT

Cast NatureForm 'tree trunks' with inlaid fossilized white clam shell tops



**2036-870-56C Trunk Segment
Dining Table with Glass Top - Gold Leaf**
56 diameter x 30H in.

SIGNATURE DESIGNS - 2037 SERIES/TRUNK SEGMENT

Cast NatureForm 'tree trunks' with inlaid fossilized white clam shell tops



**2037-870-56C Trunk Segment
Dining Table with Glass Top - Silver Leaf**
56 diameter x 30H in.

SIGNATURE DESIGNS - 2085 SERIES/ITERATION

Transitional silhouettes featuring tapered iron bases in silver leaf, woven wicker, and wire brushed mahogany



Iteration features a transitional and remarkably comfortable chair form with a continuous curved back and seat in wicker, suspended within tapered iron frames in silver leaf. The table boasts a top in mahogany wire-brushed in a starburst pattern and finished in a cool driftwood tone and base utilizing eight four-way tapers on the posts. *Please see pgs. 278-279 for important information regarding silver leaf finishes.*

SIGNATURE DESIGNS - 2085 SERIES/ITERATION

Transitional silhouettes featuring tapered iron bases in silver leaf, woven wicker, and wire brushed mahogany



2085-870C
Iteration Round Dining Table
48 diameter x 30H in.



2085-880-01
Iteration Side Chair
23.25W x 26.5D x 40H in.
Seat 20.25W x 18D x 20H in.
Standard fabric 153711
Also available in Special Order fabrics,
leathers and COM.

SIGNATURE DESIGNS - 2089 SERIES/RACONTEUR

Rattan peel in a white washed finish and gun metal gray iron frames



The Raconteur arm chair is a retro-cool and casual design and features a solid iron frame in gun metal gray, wrapped in peeled rattan finished in a white wash.

SIGNATURE DESIGNS - 2089 SERIES/RACONTEUR

Rattan peel in a white washed finish and gun metal gray iron frames



2089-881-01 Raconteur Arm Chair
27W x 29D x 37H in.
Arm 25.75H in.
Seat 21.25W x 19.5D x 19H in.
Standard fabric 153711
Also available in Special Order fabrics,
leathers and COM.



Traditional designs crafted from hardwood solids and walnut veneers in a rich walnut finish with a low sheen



This petite, tasteful set combines silhouettes from different eras, with a contemporized spoon back chair married to a Scandinavian dining base, all in walnut and select hardwood solids and crown walnut veneers in a radial starburst pattern. The finish is low sheen, showing subtle highs and lows and some pores, emphasizing the unmistakable walnut grain.



2104-880-01
Beale Low Back Side Chair
 21.75W x 26D x 36.5H in.
 Seat 21W x 20D x 20H in.
 Standard fabric 427171
 Also available in Special Order fabrics,
 leathers and COM.

Traditional designs crafted from hardwood solids and walnut veneers in a rich walnut finish with a low sheen



Rich crown walnut veneers grace both the Beale dining top and the chair backs.



2104-870C
Beale Round Dining Table
 50 diameter x 30H in.

Traditional designs crafted from hardwood solids and walnut veneers in a rich walnut finish with a low sheen



2104-896-01 Beale Low Back Barstool

19W x 21.5D x 37.5H in.
Seat 17W x 19D x 30H in.
Standard fabric 427171
Also available in Special Order fabrics,
leathers and COM.



2104-895-01 Beale Low Back Counter Stool

19W x 21.5D x 31.5H in.
Seat 17W x 19D x 24H in.
Standard fabric 427171
Also available in Special Order fabrics,
leathers and COM.

Traditional designs crafted from hardwood solids and walnut veneers in a rich walnut finish with a low sheen



The Beale stools feature a graceful, sweeping low back clad in crown walnut veneers, providing just the right amount of back support for this low-profile silhouette.

SIGNATURE DESIGNS - 2102 SERIES/VIGGO

Danish antique reproductions crafted from mahogany solids and woven abaca in a painted black finish



2102-895-01 Viggo Counter Stool
22.5W x 23.5D x 37.5H in.
Seat 21W x 18.5D x 24H in.



2102-896-01 Viggo Barstool
22.5W x 23.5D x 43.5H in.
Seat 21W x 18.5D x 30H in.

SIGNATURE DESIGNS - 2102 SERIES/VIGGO

Danish antique reproductions crafted from mahogany solids and woven abaca in a painted black finish



Our Viggo stools are Danish Mid-Century antique reproductions in solid mahogany, with a textured and worn black finish and natural woven abaca completing an authentic appearance.



MEDIA CONSOLES
AND HALL CHESTS

SIGNATURE DESIGNS - MEDIA CONSOLES AND HALL CHESTS
Stunning original designs scaled to accommodate today's wide variety of flat panel screens



SIGNATURE DESIGNS - 2208 SERIES/METAPHOR

Contemporary designs crafted from white oak solids and select hardwoods in our Cerused White Gray finish



The Metaphor Media Consoles and Chest feature exceptional Églomisé panels individually painted in flowing Abstract Expressionist patterns reminiscent of Italian book paper, contrasted against our Cerused White Gray finish on flat-cut white oak and accented with brushed stainless steel. Metaphor occasional tables, pages 169-171

Each tempered glass panel is individually back painted by an artist and will vary from panel to panel.

SIGNATURE DESIGNS - 2208 SERIES/METAPHOR

Contemporary designs crafted from white oak solids and select hardwoods in Cerused White Gray finish



2208-907 Metaphor Media Console
68W x 17D x 32H in.



SIGNATURE DESIGNS - 2208 SERIES/METAPHOR

Contemporary designs crafted from white oak solids and select hardwoods in our Cerused White Gray finish



At over 100", the dramatic Metaphor Long Media Console is intended for today's largest flat screens, or to anchor a long wall. The sliding doors are interchangeable and can be installed in either two-and-four or three-doors-per-track configurations. Metaphor occasional tables, pages 169-171

Each tempered glass panel is individually back painted by an artist and will vary from panel to panel.

SIGNATURE DESIGNS - 2208 SERIES/METAPHOR

Contemporary designs crafted from white oak solids and select hardwoods in our Cerused White Gray finish



**2208-908 Metaphor
Long Media Console**
100.5W x 17D x 32H in.



SIGNATURE DESIGNS - 2208 SERIES/METAPHOR

Contemporary designs crafted from white oak solids and select hardwoods in our Cerused White Gray finish



The Metaphor Hall Chest employs touch-latch hardware to maintain the continuity of the Églomisé drawer-front panels. Each tempered glass panel is individually back painted by an artist and will vary from panel to panel. Metaphor occasional tables, pages 169-171

SIGNATURE DESIGNS - 2208 SERIES/METAPHOR

Contemporary designs crafted from white oak solids and select hardwoods in our Cerused White Gray finish



2208-973 Metaphor Hall Chest
42W x 20D x 34.25H in.



SIGNATURE DESIGNS - 2149 SERIES/LOGAN

White oak and select hardwood solids and quartered white oak veneers in Cered White Gray finish, with brass hardware clad in silver

SIGNATURE DESIGNS - 2149 SERIES/LOGAN

White oak and select hardwood solids and quartered white oak veneers in Cered White Gray finish, with brass hardware clad in silver



SIGNATURE DESIGNS - 2149 SERIES/LOGAN

White oak and select hardwood solids and quartered white oak veneers in Cerused White Gray finish, with brass hardware clad in silver



2149-907 Logan Convertible Long Media Console/Bufet
107.5W x 17D x 30H in.
Shown with included optional tall legs



2149-907 Logan Convertible Long Media Console/Bufet
107.5W x 17D x 26H in.
Shown with included optional short legs



SIGNATURE DESIGNS - 2149 SERIES/LOGAN

White oak and select hardwood solids and quartered white oak veneers in Cerused White Gray finish, with brass hardware clad in silver



The Logan is a true showpiece, featuring our Cerused White Gray finish on white oak applied over six four-way chamfered concave door panels, with brilliant silver-clad hardware imitating the quartered oak wood grain. At 107", this piece will anchor even the 100" class of ultra-high-end monitors and ships with two sets of legs for further versatility.

The legs shown below left hold the piece to a 30" height, while the supplemental pair of legs shortens the case to 26" for more contemporary settings and the largest monitors.



SIGNATURE DESIGNS - 2119 SERIES/GRADIENT

Contemporary designs crafted from white oak solids and quartered oak veneers in our Cerused White Gray finish, with brushed stainless steel hardware and plinths



The Gradient is a stately and modern credenza, featuring our Cerused White Gray finish over quartered white oak veneers in a concentric door pattern and long pulls and a base plinth in brushed stainless steel. The interior features two compartments, each with a large drawer and adjustable shelf, allowing the piece to double as a buffet.

SIGNATURE DESIGNS - 2119 SERIES/GRADIENT

Contemporary designs crafted from white oak solids and quartered oak veneers in our Cerused White Gray finish, with brushed stainless steel hardware and plinths



**2119-907 Gradient
Media Console/Bufet**
68W x 17D x 34H in.



SIGNATURE DESIGNS - 2119 SERIES/GRADIENT

Contemporary designs crafted from white oak solids and quartered oak veneers in our Cerused White Gray finish, with brushed stainless steel hardware and plinths



In its long configuration, the Gradient becomes a grand statement piece for media and long walls, while also appropriate as a server in dining settings.

SIGNATURE DESIGNS - 2119 SERIES/GRADIENT

Contemporary designs crafted from white oak solids and quartered oak veneers in our Cerused White Gray finish, with brushed stainless steel hardware and plinths



**2119-908 Gradient
Long Media Console**
101.5W x 17D x 34H in.



SIGNATURE DESIGNS - 2119 SERIES/GRADIENT

Contemporary design crafted from white oak solids and quartered oak veneers in a white sandblasted finish with brushed stainless steel hardware and sled base



Modern original design in mahogany solids and quartered white oak veneers in a whitewashed ceruse, featuring drawer panels in a concentric recessed pattern of small half-round moldings. Inset hardware and sled bases in brushed stainless steel.

SIGNATURE DESIGNS - 2119 SERIES/GRADIENT

Contemporary design crafted from white oak solids and quartered oak veneers in a white sandblasted finish with brushed stainless steel hardware and sled base



The Gradient's modern pulls are recessed into the complex drawer fronts and feature a brushed stainless steel finish.



2119-973 Gradient
Three Drawer Hall Chest
36W x 18D x 34H in.

SIGNATURE DESIGNS - 2205 SERIES/INVICTA

Contemporary original designs in select hardwood and maple veneers, a rich navy blue painted finish with low sheen, and navy faux horn, acrylic and polished nickel accents



The Invicta chest features a stunning façade of faux horn in brilliant shades of blue, offset against a cove of white and surrounded in a rich navy, with beautiful bar pulls of acrylic and polished stainless. *Faux horn is hand painted by artists and will vary in appearance from piece to piece.*

SIGNATURE DESIGNS - 2205 SERIES/INVICTA

Contemporary original designs in select hardwood and maple veneers, a rich navy blue painted finish with low sheen, and navy faux horn, acrylic and polished nickel accents



**2205-973 Invicta
Hall Chest**
42W x 20D x 36H in.

Each Invicta chest face is finished by an individual artist and will slightly vary in appearance from piece to piece.



SIGNATURE DESIGNS - 2267/2268 SERIES/ELATION

Faux horn motif hand-painted by artists on individual resin tiles in either a light or dark gray bone coloration, with custom acrylic hardware and bright nickel finished clasps



The Elation White hall chest features faux horn tiles hand painted in a bleached bone coloration, while Elation Grey utilizes a range of rich grays. Both pieces are completed with complementary matte paint case finishes and acrylic hardware with polished nickel accents. Please see artisticahome.com for additional Elation Grey images.

SIGNATURE DESIGNS - 2267/2268 SERIES/ELATION

Faux horn motif hand-painted by artists on individual resin tiles in either a light or dark gray bone coloration, with custom acrylic hardware and bright nickel finished clasps



2267-973 Elation White Hall Chest
42W x 20D x 36H in.



2268-973 Elation Grey Hall Chest
42W x 20D x 36H in.

Elation's faux horn tiles are hand painted by artists, and color variation from piece to piece is to be expected.

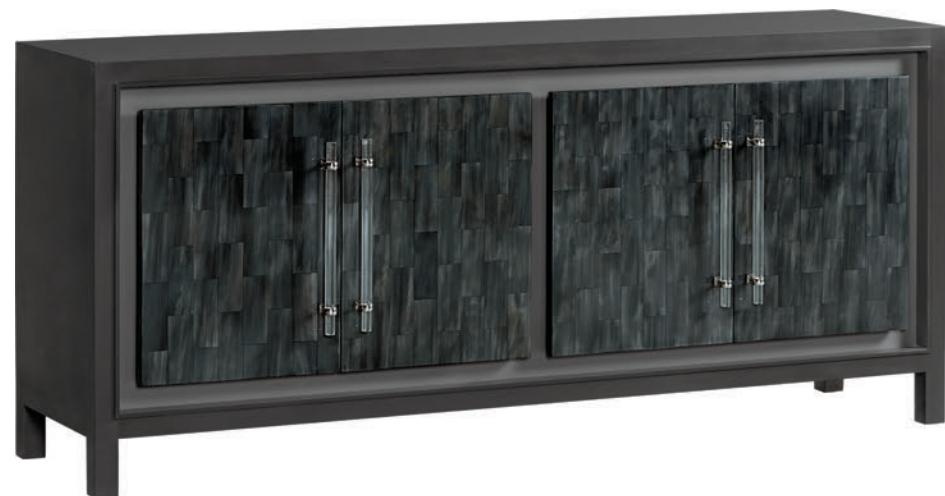
SIGNATURE DESIGNS - 2267/2268 SERIES/ELATION

Faux horn motif hand-painted by artists on individual resin tiles in either a light or dark gray bone coloration, with custom acrylic hardware and bright nickel finished clasps



Elation's faux horn tiles are hand painted by artists, and color variation from piece to piece is to be expected.

**2267-907 Elation
White Media Console**
68W x 17D x 30H in.



**2268-907 Elation
Grey Media Console**
68W x 17D x 30H in.

SIGNATURE DESIGNS - 2267/2268 SERIES/ELATION

Faux horn motif hand-painted by artists on individual resin tiles in either a light or dark gray bone coloration, with custom acrylic hardware and bright nickel finished clasps



The Elation media consoles feature dramatic cylindrical acrylic pulls with clasps of polished nickel. Behind each pair of doors is an adjustable shelf, and each compartment is vented and ported for components and wire management. *Please see artisticahome.com for additional Elation Grey images.*

SIGNATURE DESIGNS - 2267/2268 SERIES/ELATION

Faux horn motif hand-painted by artists on individual resin tiles in either a light or dark gray bone coloration, with custom acrylic hardware and bright nickel finished clasps



The Elation long media consoles are dramatic statement pieces for any long wall and are perfect anchors for today's largest flat screens. Please see artisticahome.com for additional Elation Grey images.



Elation's faux horn tiles are hand painted by artists, and color variation from piece to piece is to be expected.

SIGNATURE DESIGNS - 2267/2268 SERIES/ELATION

Faux horn motif hand-painted by artists on individual resin tiles in either a light or dark gray bone coloration, with custom acrylic hardware and bright nickel finished clasps



2267-908 Elation White Long Media Console
99.5W x 17D x 30H in.



2268-908 Elation Grey Long Media Console
99.5W x 17D x 30H in.



SIGNATURE DESIGNS - 2203 SERIES/IRIDIUM

Contemporary designs in Beech solids and Maple veneers hand painted by artists in a gray and silver crosshatch pattern over silver leaf, with true lacquer finish and bases in polished stainless steel



SIGNATURE DESIGNS - 2203 SERIES/IRIDIUM

Contemporary designs in Beech solids and Maple veneers hand painted by artists in a gray and silver crosshatch pattern over silver leaf, with true lacquer finish and bases in polished stainless steel



2203-973
Iridium Hall Chest
42W x 18 x 37.5H in.

Each Iridium chest is finished by an individual artist and will vary in appearance from piece to piece.

Iridium occasional tables, pages 108-111



SIGNATURE DESIGNS - 2140 SERIES/ZEITGEIST WHITE

Quartered white oak veneers and white oak solids in a white and gray wire brushed cerused finish



Our Zeitgeist collection is designed to offer a variety of long wall configurations for both bedroom and media settings. When grouped together, the three cases form a dramatic 126" wall, with the center dresser creating a breakfront effect across the group.



SIGNATURE DESIGNS - 2140 SERIES/ZEITGEIST WHITE

Quartered white oak veneers and white oak solids in a white and gray wire brushed cerused finish



Zeitgeist is our most versatile case collection, featuring beautifully proportioned cabinets with architectural lines and repeated chamfered moldings, all dressed in a very light ceruse of white and gray on white oak solids and veneers, and completed with ring pulls in brushed stainless steel.



The deep wire brushing of straight quartered white oak veneers accentuates the textures of our white and gray ceruse.

SIGNATURE DESIGNS - 2140 SERIES/ZEITGEIST WHITE

Quartered white oak veneers and white oak solids in a white and gray wire brushed cerused finish



2140-222 Zeitgeist White Double Dresser
54W x 22D x 35H in.



2140-907 Zeitgeist White Media Console
54W x 22D x 35H in.

SIGNATURE DESIGNS - 2140 SERIES/ZEITGEIST WHITE

Quartered white oak veneers and white oak solids in a white and gray wire brushed cerused finish



Designed to stand alone or to group together in long wall systems, Zeitgeist dressers are available in two configurations, with a standard six-drawer case complemented by a media version with two vented and ported top component cubbies.

SIGNATURE DESIGNS - 2140 SERIES/ZEITGEIST WHITE

Quartered white oak veneers and white oak solids in a white and gray wire brushed cerused finish



**2140-973 Zeitgeist
White Drawer Hall Chest**
36W x 20D x 35H in.

SIGNATURE DESIGNS - 2140 SERIES/ZEITGEIST WHITE

Quartered white oak veneers and white oak solids in a white and gray wire brushed cerused finish



The Zeitgeist drawer chest features repeated subtle motifs, with chamfered designs on both moldings and the base plinth, and is intended as a stand-alone bedside chest or for use in long wall configurations.

SIGNATURE DESIGNS - 2140 SERIES/ZEITGEIST WHITE

Quartered white oak veneers and white oak solids in a white and gray wire brushed cerused finish



SIGNATURE DESIGNS - 2140 SERIES/ZEITGEIST WHITE

Quartered white oak veneers and white oak solids in a white and gray wire brushed cerused finish

**2140-974 Zeitgeist
White Hall Door Chest**
36W x 20D x 35H in.



The Zeitgeist door chest is ported and vented for media and can be used to house components in long wall configurations featuring the drawer dresser, as well as a stand-alone piece.

SIGNATURE DESIGNS - 2141 SERIES/ZEITGEIST LINEN

Versatile cases in lacquered performance fabric emulating linen and brushed nickel hardware



Our Zeitgeist collection is designed to offer a variety of long wall configurations for both bedroom and media settings. When grouped together, the three cases form a dramatic 126" wall, with the center dresser creating a breakfront effect across the group.



Dressers 54" in width are available in a standard silhouette as shown at top and also in a media configuration with two open component cubbies. The door chest is also ported and vented for media, meaning that a standard dresser configuration can still accommodate media components.

SIGNATURE DESIGNS - 2141 SERIES/ZEITGEIST LINEN

Versatile cases in lacquered performance fabric emulating linen and brushed nickel hardware



Zeitgeist is our most versatile case collection, featuring beautifully proportioned cabinets with architectural lines and repeated chamfered moldings, and, in this case, dressed in durable performance fabric with a linen-like appearance and hand. After carefully tailoring of the fabric, each piece receives a slick topcoat with a matte finish and is completed with ring pulls in brushed stainless steel.

SIGNATURE DESIGNS - 2141 SERIES/ZEITGEIST LINEN

Versatile cases in lacquered performance fabric emulating linen and brushed nickel hardware



Designed to stand alone or to group together in long wall systems, Zeitgeist dressers are available in two configurations, with a standard six-drawer case complemented by a media version with two vented and ported top component cubbies.

SIGNATURE DESIGNS - 2141 SERIES/ZEITGEIST LINEN

Versatile cases in lacquered performance fabric emulating linen and brushed nickel hardware

**2141-222 Zeitgeist
Linen Double Dresser**
54W x 22D x 35H in.



**2141-907 Zeitgeist
Linen Media Console**
54W x 22D x 35H in.



The Zeitgeist Drawer Chest features repeated subtle motifs, with chamfered designs on both moldings and the base plinth, and is intended as a stand-alone bedside chest or for use in long wall configurations.



Zeitgeist Linen cases are completed by veneering durable performance fabric with a linen-like hand and appearance and protecting it with a slick topcoat in a matte finish.



**2141-973 Zeitgeist
Linen Drawer Hall Chest**
36W x 20D x 35H in.



**2141-974 Zeitgeist
Linen Hall Door Chest**
36W x 20D x 35H in.



The Zeitgeist door chest is ported and vented for media and can be used to house components in long wall configurations featuring the drawer dresser, as well as a stand-alone piece.

SIGNATURE DESIGNS - 2141 SERIES/ZEITGEIST LINEN

Lacquered performance fabric emulating linen, with brushed nickel hardware and accents



**2141-972 Zeitgeist Linen
Demilune Hall Chest**
33W x 17D x 36.5H in.



Fully veneered inside and out, the Demilune features shaped adjustable shelves and drawers that open diagonally with soft-close glides.

SIGNATURE DESIGNS - 2141 SERIES/ZEITGEIST LINEN

Lacquered performance fabric emulating linen, with brushed nickel hardware and accents



The Zeitgeist Demilune is beautifully scaled, feminine, and carefully tailored inside and out in a linen-like performance fabric with a smooth lacquer coating.

SIGNATURE DESIGNS - 2150 SERIES/MONSTUART

White oak and select hardwood solids with quartered white oak veneers and raffia in a wire brushed cerused gray finish



A grand credenza harkening to the Mid-Century Modern era with shaped overlays, contrasting raffia back panels and wrapped in quartered white oak in a warm gray wire brushed ceruse. At 99", this piece will anchor even the 100" class of ultra-high-end monitors. Fully outfitted interior, with adjustable shelves and four interior drawers, ported for media, and with exterior grab pulls beneath the overlays.

SIGNATURE DESIGNS - 2150 SERIES/MONSTUART

White oak and select hardwood solids with quartered white oak veneers and raffia in a wire brushed cerused gray finish



**2150-907 Monstuart
Long Media Console/Bufet**
99W x 18D x 36H in.





The three-door Mercury long credenza has enough width to anchor 80-inch class televisions and is ported and vented for media.



**2025-908 Mercury
Large Media Credenza**
87.5W x 18D x 34H in.



The Mercury media credenzas are linear door cabinets with quartered ash veneers in a gray wire-brushed ceruse, centered by recessed cameo panels in bleached olive ash burl, and completed with simple square pulls in bright stainless. For use as media consoles, buffets, or stunning stand-alone sideboards. Each features two adjustable shelves behind each door and is ported for wire management and ventilation.



2025-907 Mercury Media Credenza
59.25W x 18D x 34H in.





SIGNATURE DESIGNS - 2055 SERIES/CREDO

Transitional mahogany cases in an ivory matte lacquer finish, inset castings and metal bases in warm silver leaf finish



**2055-907 Credo
Entertainment Console**
70.5W x 18.25D x 30H in.



**2055-973 Credo
Hall Chest**
38W x 18D x 36.75H in.

SIGNATURE DESIGNS - 2055 SERIES/CREDO

Transitional mahogany cases in an ivory matte lacquer finish, inset castings and metal bases in warm silver leaf finish



The Credo Hall Chest and Entertainment Console, with their patterned casted drawer/door fronts creating moiré effects, lend a glamorous iridescence to any setting. The chest features soft-close drawer guides, while the entertainment console features four adjustable shelves behind soft-close hinged doors. Please see pgs. 278-279 for important information regarding silver leaf finishes. Please see artisticahome.com for additional room and detail images

SIGNATURE DESIGNS - 2212 SERIES/VISCOUNT

Transitional console crafted from Beech solids and Maple veneers, hand painted by artists in a gold and dark umber crosshatch pattern over warm silver leaf, with hardware in polished nickel inset with faux horn



Like its name, the Viscount is a glamorous, noble modernized Regency statement piece dressed in a very warm silver leaf crosshatched in gold and dark umber tones and polished with layers of true lacquer. The oversized hardware is in polished nickel inset with faux horn, and the interior is fully finished in a camel tone with faceted nickel pulls.

Each Viscount console is finished by an individual artist and will slightly vary in appearance from piece to piece.

SIGNATURE DESIGNS - 2212 SERIES/VISCOUNT

Transitional console crafted from Beech solids and Maple veneers, hand painted by artists in a gold and dark umber crosshatch pattern over warm silver leaf, with hardware in polished nickel inset with faux horn



2212-907 Viscount Media Console
79W x 17D x 34H in.



SIGNATURE DESIGNS - 2202 SERIES/ASCENSION

Crafted from faux Shagreen in a warm gray finish with antique mirror and polished stainless steel accents



The Ascension's faceted drawer fronts in warm gray faux shagreen provide a sophisticated textural contrast to the hand-antiqued mirror and delicate hardware.

SIGNATURE DESIGNS - 2202 SERIES/ASCENSION

Crafted from faux Shagreen in a warm gray finish with antique mirror and polished stainless steel accents



2202-973
Ascension Hall Chest
36W x 18D x 38H in.



SIGNATURE DESIGNS - 2117 SERIES/CHIAVARI

Traditional designs crafted from walnut veneers, walnut and mahogany solids in a bleached walnut finish with ferrules and custom lost wax cast solid brass hardware in an antique finish



The Chiavari Hall Chest is dressed in flow-matched crown walnut veneers across the gentle concave face of the piece and finished to appear as an antique, with areas of sun bleach and finalized with a coating of English black wax.

SIGNATURE DESIGNS - 2117 SERIES/CHIAVARI

Traditional designs crafted from walnut veneers, walnut and mahogany solids in a bleached walnut finish with ferrules and custom lost wax cast solid brass hardware in an antique finish



**2117-973 Chiavari
Three Drawer Hall Chest**
44W x 16D x 38H in



OCCASIONAL TABLES
AND ETAGERES



Unusual and sometimes rare materials are utilized in this collection to achieve our unique designs. For additional information about specific materials, please see pages 278-279 before ordering.

SIGNATURE DESIGNS - 2203 SERIES/IRIDIUM

Contemporary designs in Beech solids and Maple veneers hand painted by artists in a gray and silver crosshatch pattern over silver leaf, with true lacquer finish and bases in polished stainless steel



Iridium's striking modern design silhouettes feature thick slab tops hand-painted in a distinctive cross-hatch pattern and finished in coats of true lacquer standing on sled bases of polished stainless steel. *Each Iridium table is finished by an individual artist and will slightly vary in appearance from piece to piece.*



2203-945
Iridium Rectangular
Cocktail Table
56W x 30D x 17H in.



SIGNATURE DESIGNS - 2203 SERIES/IRIDIUM

Contemporary designs in Beech solids and Maple veneers hand painted by artists in a gray and silver crosshatch pattern over silver leaf, with true lacquer finish and bases in polished stainless steel



2203-953
Iridium Round End Table
26 diameter x 25H in.

SIGNATURE DESIGNS - 2203 SERIES/IRIDIUM

Contemporary designs in Beech solids and Maple veneers hand painted by artists in a gray and silver crosshatch pattern over silver leaf, with true lacquer finish and bases in polished stainless steel



At only 12" in depth, the Iridium console creates a substantial design statement in a slender silhouette. *Iridium Hall Chest, pages 70-71.*

SIGNATURE DESIGNS - 2203 SERIES/IRIDIUM

Contemporary designs in Beech solids and Maple veneers hand painted by artists in a gray and silver crosshatch pattern over silver leaf, with true lacquer finish and bases in polished stainless steel



2203-966
Iridium Console
54W x 12D x 36H in.



SIGNATURE DESIGNS - 2267 SERIES/ELATION WHITE

Faux horn motif hand-painted by artists on individual resin tiles in a light or dark gray bone coloration set against solid painted bases



The Elation cocktails and consoles feature hand-painted faux horn tiles inlaid in concave shapes subtly contrasted against solid, lower sheen paint finishes in either light or dark gray. The resulting combinations are stunning original designs with great dimensional depth. *Faux horn is hand painted by artists and will vary in appearance from piece to piece. Bello Round Spot Table shown in background.*

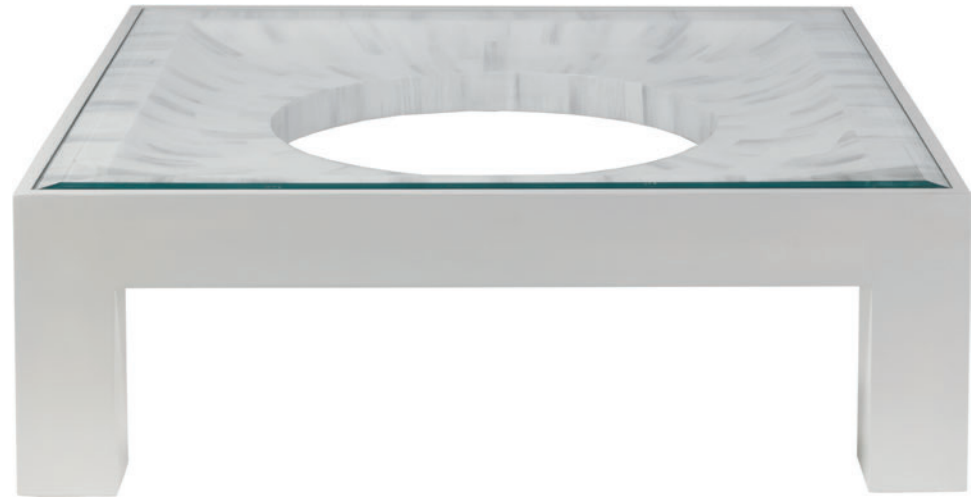
SIGNATURE DESIGNS - 2267 SERIES/ELATION WHITE

Faux horn motif hand-painted by artists on individual resin tiles in a light or dark gray bone coloration set against solid painted bases



SIGNATURE DESIGNS - 2267 SERIES/ELATION WHITE

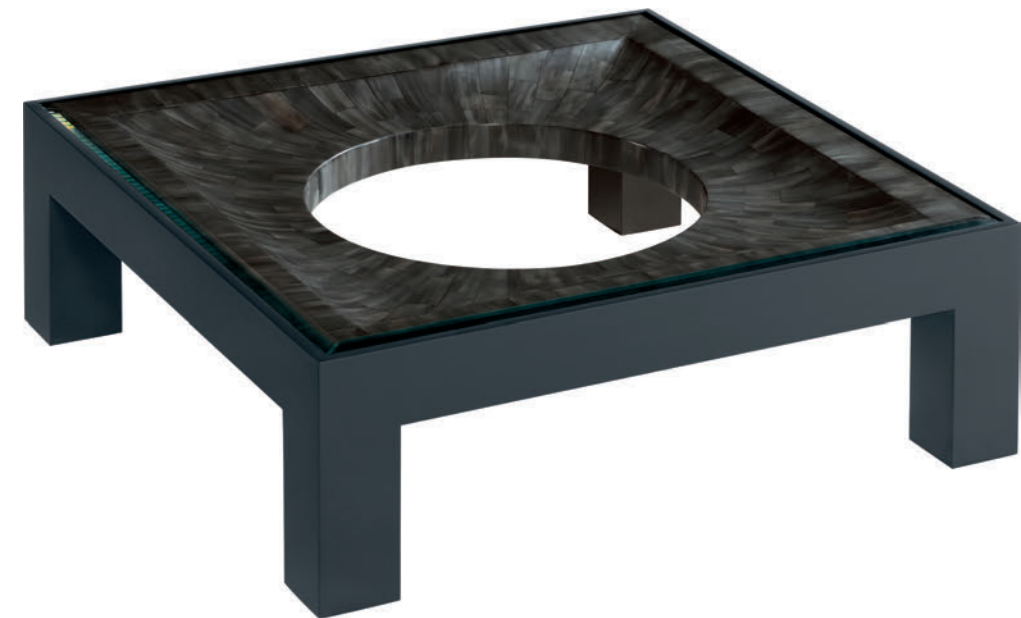
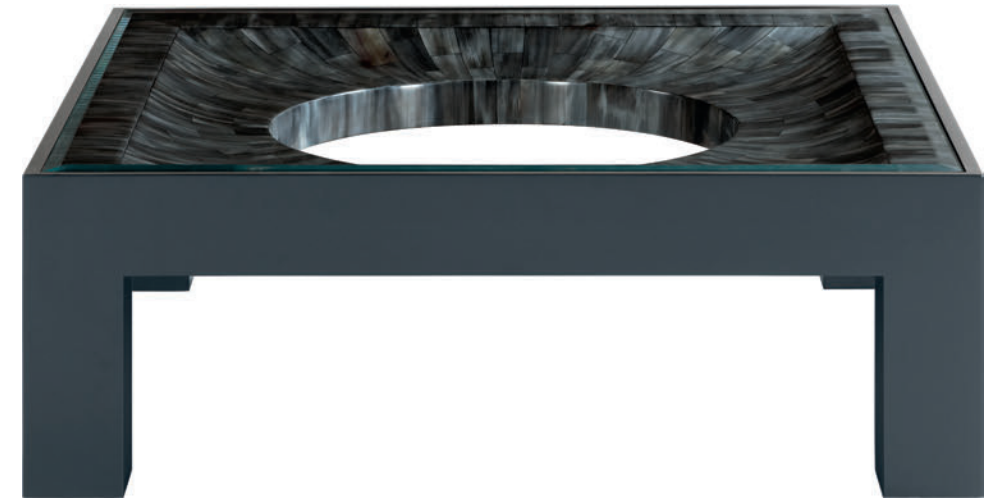
Faux horn motif hand-painted by artists on individual resin tiles in a light or dark gray bone coloration set against solid painted bases



**2267-947 Elation White
Square Cocktail Table**
48W x 48D x 16H in.

SIGNATURE DESIGNS - 2268 SERIES/ELATION GREY

Faux horn motif hand-painted by artists on individual resin tiles in a light or dark gray bone coloration set against solid painted bases



**2268-947 Elation Grey
Square Cocktail Table**
48W x 48D x 16H in.

Please visit artisticahome.com for additional Elation Grey images.

SIGNATURE DESIGNS - 2267 SERIES/ELATION WHITE

Faux horn motif hand-painted by artists on individual resin tiles in a light or dark gray bone coloration set against solid painted bases



Though only 12" in depth, the Elation consoles are dramatic visual forms, with insets of faux horn tiles sloping towards a graceful elliptical center. Faux horn is hand painted by artists and will vary in appearance from piece to piece. Bello Faceted Drum Tables also shown.

SIGNATURE DESIGNS - 2267 SERIES/ELATION WHITE

Faux horn motif hand-painted by artists on individual resin tiles in a light or dark gray bone coloration set against solid painted bases



SIGNATURE DESIGNS - 2267 SERIES/ELATION WHITE

Faux horn motif hand-painted by artists on individual resin tiles in a light or dark gray bone coloration set against solid painted bases



**2267-966 Elation
White Console**
72W x 12D x 36H in.

SIGNATURE DESIGNS - 2268 SERIES/ELATION GREY

Faux horn motif hand-painted by artists on individual resin tiles in a light or dark gray bone coloration set against solid painted bases



**2268-966 Elation
Grey Console**
72W x 12D x 36H in.

SIGNATURE DESIGNS - 2202 SERIES/ASCENSION

Crafted from faux Shagreen in a warm gray finish with antique mirror and polished stainless steel accents



Sophisticated original contemporary designs featuring reverse-taper posts, clad in faux Shagreen in a subtle, warm gray with inset antique mirror and stainless steel accents. *Ascension Hall Chest, pages 102-103.*



2202-945
Ascension Rectangular
Cocktail Table
54W x 27D x 19H in.

SIGNATURE DESIGNS - 2202 SERIES/ASCENSION

Crafted from faux Shagreen in a warm gray finish with antique mirror and polished stainless steel accents



SIGNATURE DESIGNS - 2202 SERIES/ASCENSION

Crafted from faux Shagreen in a warm gray finish with antique mirror and polished stainless steel accents



The Ascension spot table features an unusual trapezoidal and faceted eight-sided base completely clad in faux shagreen.

SIGNATURE DESIGNS - 2202 SERIES/ASCENSION

Crafted from faux Shagreen in a warm gray finish with antique mirror and polished stainless steel accents



**2202-950 Ascension
Spot Table**
16 inch diameter x 26H in.

SIGNATURE DESIGNS - 2202 SERIES/ASCENSION

Crafted from faux Shagreen in a warm gray finish with antique mirror and polished stainless steel accents



SIGNATURE DESIGNS - 2202 SERIES/ASCENSION

Crafted from faux Shagreen in a warm gray finish with antique mirror and polished stainless steel accents



2202-955
Ascension Rectangular
End Table
18W x 27D x 26H in.



2202-966
Ascension Console
53W x 18D x 36H in.

SIGNATURE DESIGNS - 2204 SERIES/METROPOLE

Neoclassical original designs crafted from select hardwoods, veneered in hand-antiqued mirror, with thin framing in Beech with a silver leaf finish



Metropole's geometric forms pull subtle reflections from an array of directions. The cocktail, console and rectangular end are drawn at the waist, while the square end table boasts a total of 25 facets on five sides.



2204-957 Metropole Square End Table
24W x 24D x 25H in.

SIGNATURE DESIGNS - 2204 SERIES/METROPOLE

Neoclassical original designs crafted from select hardwoods, veneered in hand-antiqued mirror, with thin framing in Beech with a silver leaf finish



2204-945 Metropole Rectangular Cocktail Table
54W x 30D x 18H in.



SIGNATURE DESIGNS - 2204 SERIES/METROPOLE

Neoclassical original designs crafted from select hardwoods, veneered in hand-antiqued mirror, with thin framing in Beech with a silver leaf finish



SIGNATURE DESIGNS - 2204 SERIES/METROPOLE

Neoclassical original designs crafted from select hardwoods, veneered in hand-antiqued mirror, with thin framing in Beech with a silver leaf finish



**2204-955 Metropole
Rectangular End Table**
27W x 18D x 26H in.



SIGNATURE DESIGNS - 2204 SERIES/METROPOLE

Neoclassical original designs crafted from select hardwoods, veneered in hand-antiqued mirror, with thin framing in Beech with a silver leaf finish

SIGNATURE DESIGNS - 2204 SERIES/METROPOLE

Neoclassical original designs crafted from select hardwoods, veneered in hand-antiqued mirror, with thin framing in Beech with a silver leaf finish



2204-966 Metropole Console
34W x 12D x 36H in.

The Metropole console draws reflections from both above and below and features 16 individual mirror insets.

SIGNATURE DESIGNS - 2173 SERIES/BRILLIANTE

Hand-hammered metal bases in silver foil finish, inset troca shell inlay



Brilliante's dainty forms feature slender legs in soft-hammered iron clad in silver foil and are completed with spectacular Troca shell tops in an iridescent technique normally associated with jewelry boxes. Please see pgs. 278-279 for important information regarding Troca shell and other exotic materials.



**2173-949C Brilliante
Cocktail Table**
42W x 26D x 19.25H in.



SIGNATURE DESIGNS - 2173 SERIES/BRILLIANTE

Hand-hammered metal bases in silver foil finish, inset troca shell inlay



2173-966 Brilliante Console
48W x 9D x 36H in.



SIGNATURE DESIGNS - 2173 SERIES/BRILLIANTE

Hand-hammered metal bases in silver foil finish, inset troca shell inlay



Please see pgs. 278-279 for important information regarding Troca shell and other exotic materials.

SIGNATURE DESIGNS - 2173 SERIES/BRILLIANTE

Hand-hammered metal bases in silver foil finish, inset troca shell inlay



**2173-951 Brilliance
Spot Table**
20W x 10.5D x 26H in.

SIGNATURE DESIGNS - 2050 SERIES/GRAVITAS

Contemporary styles in capiz shell and hand forged iron in a champagne foil finish



Our Gravitas series features shimmering and iridescent tops of capiz shell inlaid in a concentric starburst pattern, standing on hand forged iron bases with three-sided tapered legs in a champagne foil finish. Please see pgs. 278-279 for important information regarding capiz shell and other exotic materials.

SIGNATURE DESIGNS - 2050 SERIES/GRAVITAS

Contemporary styles in capiz shell and hand forged iron in a champagne foil finish



**2050-943C Gravitas
Round Cocktail**
42 diameter x 18H in.



**2050-953C Gravitas
Round End Table**
26 diameter x 24.5H in

SIGNATURE DESIGNS - 2050 SERIES/GRAVITAS

Contemporary styles in capiz shell and hand forged iron in a champagne foil finish



SIGNATURE DESIGNS - 2050 SERIES/GRAVITAS

Contemporary styles in capiz shell and hand forged iron in a champagne foil finish



**2050-966C
Gravitas Console**
41.75W x 17.5D x 36H in.



**2050-950 Gravitas
Round Spot Table**
18 diameter x 20H in.

SIGNATURE DESIGNS - 2155 SERIES/CAPIZ PEDESTAL

Hand forged iron bases in a champagne foil finish, capiz shell inlay tops



Appropriate for both formal and more casual settings, the Capiz Pedestal collection offers Art Deco era bases in hand forged iron and clad in a shimmering champagne foil finish, offset by iridescent Capiz shell tops with a concentric inlay pattern. *Please see pgs. 278-279 for important information regarding capiz shell and other exotic materials.*



2155-950 Capiz Pedestal Round End Table
26 diameter x 24.5H in.

SIGNATURE DESIGNS - 2155 SERIES/CAPIZ PEDESTAL

Hand forged iron bases in a champagne foil finish, capiz shell inlay tops



2155-943 Capiz Pedestal Round Cocktail Table
36 diameter x 19H in.



The 2155 Capiz series is also available as the 2023 series in a White Crystal Stone and gold foil combination. *Crystal Stone Round Dining Table, pages 30-31*

SIGNATURE DESIGNS - 2156 SERIES/CUMULUS CAPIZ

Iron frames in champagne foil finish, capiz shell floating shelves, lay on glass tops



The scale of our Large Cumulus Capiz round cocktail allows the intricate radial shell starburst to truly shine, creating a visual centerpoint to any living room setting.

SIGNATURE DESIGNS - 2156 SERIES/CUMULUS CAPIZ

Iron frames in champagne foil finish, capiz shell floating shelves, lay on glass tops



Our Cumulus Capiz cocktail tables are each available in two sizes, allowing for use of this beautiful material combination in a variety of room sizes.



**2156-941C Cumulus Capiz
Large Round Cocktail Table**
50 diameter x 18.5H in.



**2156-943C Cumulus Capiz
Round Cocktail Table**
41 diameter x 18.5H in.



SIGNATURE DESIGNS - 2156 SERIES/CUMULUS CAPIZ

Iron frames in champagne foil finish, capiz shell floating shelves, lay on glass top



SIGNATURE DESIGNS - 2156 SERIES/CUMULUS CAPIZ

Iron frames in champagne foil finish, capiz shell floating shelves, lay on glass tops



2156-949C Cumulus Capiz
Large Rectangular Cocktail Table
60W x 40D x 18.5H in.



2156-945C Cumulus Capiz
Rectangular Cocktail Table
44W x 30D x 18.5H in.





**2156-955C Cumulus
Capiz Tier Table**
24W x 16D x 24H in.



**2156-958 Cumulus Capiz
Triangular Tier Table**
25.25W x 16D x 26H in.

SIGNATURE DESIGNS - 2024 SERIES/CUMULUS

Transitional iron styles in gold foil finish with fossilized crystal stone shelves and tempered lay on glass tops



The 2156 Cumulus Capiz series is also available as the 2024 series in a White Crystal Stone and gold foil combination. The new large cocktails are shown here in the 2024 combination.



**2024-941C Cumulus
Large Round Cocktail Table**
50 diameter x 18.5H in.

SIGNATURE DESIGNS - 2024 SERIES/CUMULUS

Transitional iron styles in gold foil finish with fossilized crystal stone shelves and tempered lay on glass tops



**2024-949C Cumulus
Large Rectangular
Cocktail Table**
60W x 40D x 18.5H in.

SIGNATURE DESIGNS - 2024 SERIES/CUMULUS

Transitional iron styles in gold foil finish with fossilized crystal stone shelves and tempered lay on glass tops



SIGNATURE DESIGNS - 2024 SERIES/CUMULUS

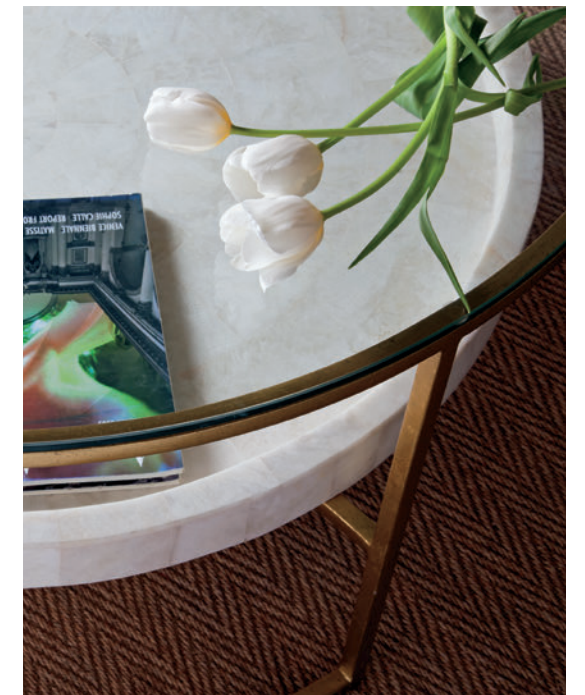
Transitional iron styles in gold foil finish with fossilized crystal stone shelves and tempered lay on glass tops



2024-945C
Cumulus Rectangular Cocktail
44W x 30D x 18.5H in.



2024-943C
Cumulus Round Cocktail
41 diameter x 18.5H in.





**2024-955C
Cumulus Tier Table**
24W x 16D x 24H in.



**2024-958 Cumulus
Triangular Tier Table**
25.25W x 16D x 26H in.

SIGNATURE DESIGNS - 2023 SERIES/CRYSTAL STONE

Transitional designs with hand forged iron bases in a gold foil finish and white crystal stone inset tops



Appropriate for both formal and more casual settings, the Crystal Stone collection offers Art Deco era bases in hand forged iron and gilded in a bright gold foil finish, offset by iridescent white crystal stone tops with a concentric inlay pattern. *Crystal Stone Round Dining Table*, pages 30-31. Please see pgs. 278-279 for important information regarding crystal stone and other fossilized materials and stone surfaces. Credo Hall Chest shown in background.



2023-950 Crystal Stone Round End Table
26 diameter x 24.5H in.

SIGNATURE DESIGNS - 2023 SERIES/CRYSTAL STONE

Transitional designs with hand forged iron bases in a gold foil finish and white crystal stone inset tops



2023-943 Crystal Stone Round Cocktail
36 diameter x 19H in.



SIGNATURE DESIGNS - 2060 SERIES/IMPRESARIO

Contemporary designs in silver travertine and mahogany finished in warm silver leaf



The Impresario series is made up of strikingly architectural contemporary forms, featuring beautiful silver travertine from Italy captured by solid mahogany bases finished in warm silver leaf. Please see pgs. 278-279 for important information regarding stone surfaces and silver leaf finishes.

SIGNATURE DESIGNS - 2060 SERIES/IMPRESARIO

Contemporary designs in silver travertine and mahogany finished in warm silver leaf



**2060-945 Impresario
Rectangular Cocktail**
54.25W x 33D x 17.75H in.



**2060-957 Impresario
Square End Table**
26W x 26D x 23.5H in.



2060-966 Impresario Console
53.5W x 14D x 34.75H in.

SIGNATURE DESIGNS - 2060 SERIES/IMPRESARIO

Contemporary designs in silver travertine and mahogany finished in warm silver leaf



Impresario stuns in its simplicity, with a graceful descending arch supporting the substantial and beautiful Italian silver travertine above. Please see pgs. 278-279 for important information regarding stone surfaces and silver leaf finishes.

SIGNATURE DESIGNS - 2181 SERIES/APRICITY

Contemporary design clad in bronze with crushed white crystal stone



The Apricity is a truly unique design conceptualizing a massive torn bronze ingot, revealing a brilliant, geode-like interior. The bases are fiber-cast and then electroformed in a thick coating of bronze, and then inlaid with broken pieces of White Crystal stone and topped with 3/4" glass. Apricity's exposed interior features hundreds of pieces of White Crystal stone fragments inlaid by hand and will vary in appearance from piece to piece.



2181-945C Apricity
Rectangular Cocktail Table
60W x 32D x 18.5H in.



SIGNATURE DESIGNS - 2214 SERIES/SASHAY GOLD

Light, airy designs in solid iron finished in antiqued gold leaf, featuring quartz-like Grano de Sal marble tops



Sashay Gold are architectural designs in solid iron, finished in antiqued gold leaf and featuring tops of quartz-like Gran de Sal marble and tapered legs each ending in a delicate foot. The petite etagere is designed to provide height and function to small spaces, and is perfect for powder rooms and guest quarters.



2214-945 Sashay Gold Rectangular Cocktail Table
54W x 26D x 18.25H in.

SIGNATURE DESIGNS - 2214 SERIES/SASHAY GOLD

Light, airy designs in solid iron finished in antiqued gold leaf, featuring quartz-like Grano de Sal marble tops



2214-955 Sashay Gold Rectangular End Table
16W x 24D x 25.75H in.



Please see pgs. 278-279 for important information regarding stone surfaces and gold leaf finishes.

SIGNATURE DESIGNS - 2214 SERIES/SASHAY GOLD

Light, airy designs in solid iron finished in antiqued gold leaf, featuring quartz-like Grano de Sal marble tops



At ten inches in depth, the Sashay Gold console does not impose while at the same time making a functional design statement.



2214-966 Sashay Gold Console
66W x 10D x 34.75H in.

SIGNATURE DESIGNS - 2214 SERIES/SASHAY GOLD

Light, airy designs in solid iron finished in antiqued gold leaf, featuring quartz-like Grano de Sal marble tops



2214-990 Sashay Gold Slim Étagère
18W x 12D x 80H in.

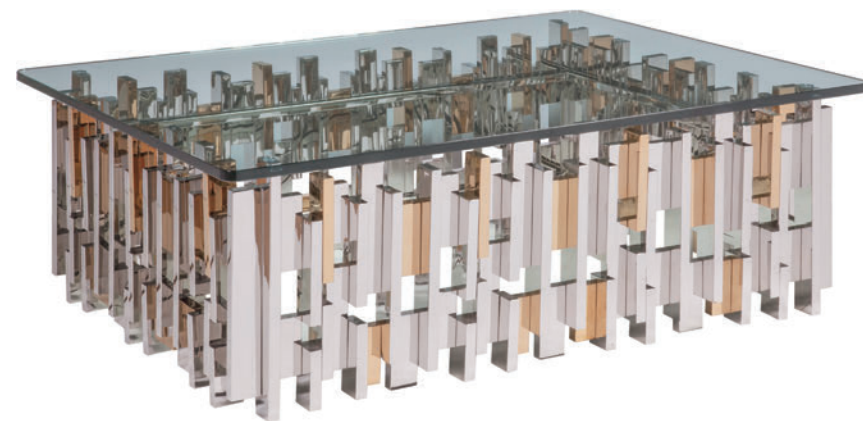


SIGNATURE DESIGNS - 2041 SERIES/CITYSCAPE

Contemporary asymmetrical designs crafted from stainless steel and brass



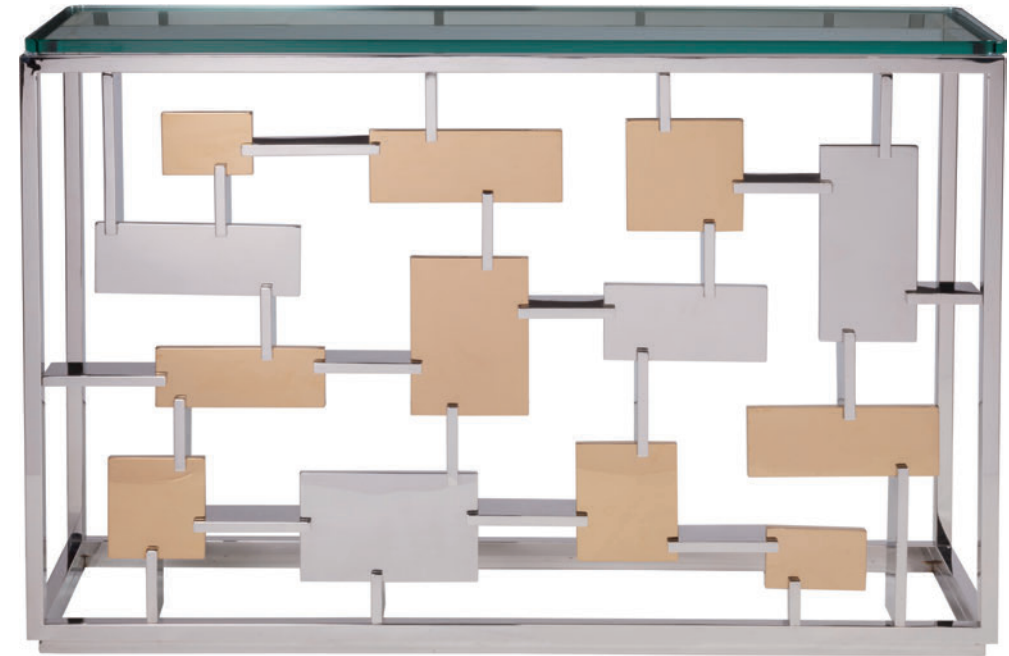
Our stunning Cityscape silhouettes are remarkable achievements in metalwork intended to evoke the emotion of great skylines and city views. They are built completely in stainless steel, with select elements electro-formed in a warm, vintage brass, and completed with 3/4" thick polished edge glass tops. Please see pgs. 278-279 for important information regarding stainless steel and polished metal finishes.



2041-945C
Cityscape
Rectangular Cocktail Table
49.75W x 36.75D x 17H in.

SIGNATURE DESIGNS - 2041 SERIES/CITYSCAPE

Contemporary asymmetrical designs crafted from stainless steel and brass



2041-966C
Cityscape Console
54W x 14D x 36H in.

SIGNATURE DESIGNS - 2022 SERIES/COLETTE

Sculptural Italian designs in hand forged iron, with a champagne foil finish



Colette is a testament to our passion for fine ironwork, with solid steel tapered and curved on the 90-degree edge of the stock – the most difficult task in forging. Please see pgs. 278-279 for important information regarding leaf and foil finishes.



SIGNATURE DESIGNS - 2022 SERIES/COLETTE

Sculptural Italian designs in hand forged iron, with a champagne foil finish



2022-949C
Colette Oval Cocktail
45W x 33D x 19H in.



2022-950C
Colette Round End Table
25.5 diameter x 26H in.

SIGNATURE DESIGNS - 2022 SERIES/COLETTE

Italian designs in hand forged iron, with a champagne foil finish and antiqued mirror tops



Our Colette Round Nesting Tables feature delicate forged iron in champagne foil finish leafed by hand and completed with distressed antique mirror tops. Please see pgs. 278-279 for important information regarding foil and leaf finishes and antique mirror.



**2022-958
Colette Round Nesting Tables**
19 diameter x 24H in.

SIGNATURE DESIGNS - 2208 SERIES/METAPHOR

Contemporary designs crafted from white oak solids and select hardwoods in our Cerused White Gray finish



The Metaphor occasional feature exceptional Églomisé tops, individually painted in flowing Abstract Expressionist patterns reminiscent of Italian book paper, contrasted against our Cerused White Gray finish on flat-cut white oak. Each tempered glass top is hand painted by an artist and will vary from piece to piece.



**2208-955C Metaphor
Round End Table**
24 diameter x 26H in.



**2208-943C Metaphor
Round Cocktail Table**
44 diameter x 18.5H in.

Please see pgs. 48-51 for companion Metaphor hall chest and media consoles.

SIGNATURE DESIGNS - 2208 SERIES/METAPHOR

Contemporary designs crafted from white oak solids and select hardwoods in a white sandblasted finish



SIGNATURE DESIGNS - 2208 SERIES/METAPHOR

Contemporary designs crafted from white oak solids and select hardwoods in a white sandblasted finish



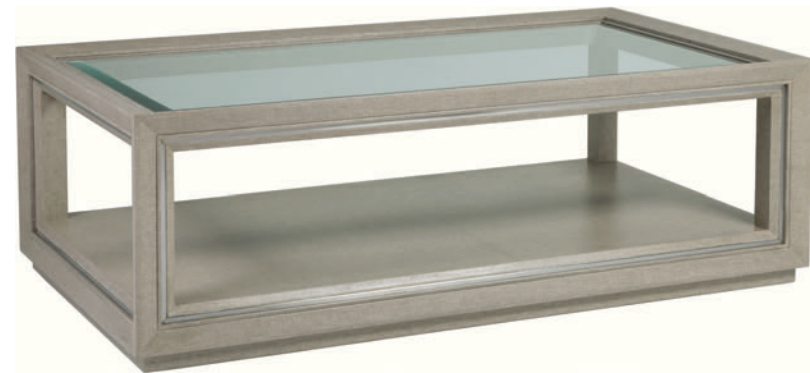
2208-966C
Metaphor Console
54W x 12D x 34.5H in.

SIGNATURE DESIGNS - 2141 SERIES/ZEITGEIST LINEN

Lacquered performance fabric emulating linen, with brushed stainless steel inlays



These transitional, architectural silhouettes are airy yet refined, with clean lines defined by the inlaid brush stainless steel on each linear surface, while the chamfered profiles on each side create an additional layer of depth.



**2141-945 Zeitgeist Linen
Rectangular Cocktail Table**
54W x 30D x 18H in.

SIGNATURE DESIGNS - 2141 SERIES/ZEITGEIST LINEN

Lacquered performance fabric emulating linen, with brushed stainless steel inlays



**2141-952 Zeitgeist Linen
Hexagonal End Table**
22.5W x 26D x 26H in.

SIGNATURE DESIGNS - 2141 SERIES/ZEITGEIST LINEN

Lacquered performance fabric emulating linen, with brushed stainless steel inlays



SIGNATURE DESIGNS - 2141 SERIES/ZEITGEIST LINEN

Lacquered performance fabric emulating linen, with brushed stainless steel inlays



**2141-966 Zeitgeist
Linen Console**
54W x 12D x 36H in.

Complementing Hall Chests and Media Consoles are shown on pages 80-89

SIGNATURE DESIGNS - 2120 SERIES/DALLIANCE

Contemporary design crafted from white oak solids and veneers in a white sandblasted finish with brushed stainless accents



A unique design intended to lend a dramatic effect to entryways and smaller spaces, in mahogany solids and heavily figured crown white oak veneers in a whitewash ceruse, all drawn at the waist with modern ormolu in brushed stainless.

SIGNATURE DESIGNS - 2120 SERIES/DALLIANCE

Contemporary design crafted from white oak solids and veneers in a white sandblasted finish with brushed stainless accents



The Dalliance's wire brushed ceruse finish coloration is designed to complement our Gradient, Logan and Zeitgeist White Oak finishes.



2120-967 Dalliance Console
33.5W x 15D x 38H in.

SIGNATURE DESIGNS - 2213 SERIES/SASHAY SILVER

Light, airy designs in solid iron finished in antiqued silver leaf, with inset tempered Églomisé tops



Sashay Silver combines slender iron forms featuring tapered legs with beautiful inset Églomisé tops evoking pooled water. Each back painted tempered glass top is created by an artist and will vary in appearance from piece to piece.



**2213-945C Sashay Silver
Rectangular Cocktail Table**
54W x 26D x 17.5H in.

SIGNATURE DESIGNS - 2213 SERIES/SASHAY SILVER

Light, airy designs in solid iron finished in antiqued silver leaf, with inset tempered Églomisé tops



**2213-955C Sashay Silver
Rectangular End Table**
16W x 24D x 25H in.



SIGNATURE DESIGNS - 2213 SERIES/SASHAY SILVER

Light, airy designs in solid iron finished in antiqued silver leaf, featuring Églomisé tops painted by individual artists in a soft gray evoking pooled water



Sashay Silver combines slender linear forms with beautiful inset Églomisé tops. Each tempered glass top is created by an artist and will vary in appearance from piece to piece.



2213-966C Sashay Silver Console
66W x 10D x 34H in.

SIGNATURE DESIGNS - 2213 SERIES/SASHAY SILVER

Light, airy designs in solid iron finished in antiqued silver leaf, featuring Églomisé tops painted by individual artists in a soft gray evoking pooled water



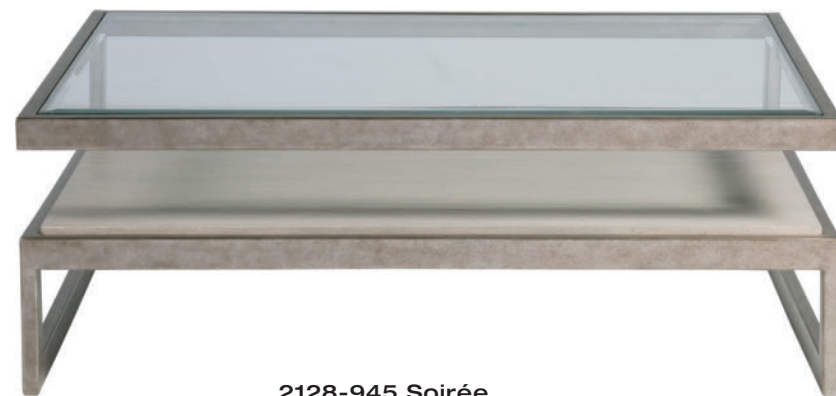
**2213-990C Sashay Silver
Slim Étagère**
18W x 12D x 80H in.

SIGNATURE DESIGNS - 2128 SERIES/SOIRÉE

Contemporary designs crafted from antiqued silver leaf finished metal bases, inset tempered glass tops and shelves in a wire brushed light gray finish



The Soirée collection features contemporary, geometric forms in silver-leafed iron and quartered, cerused white oak veneers in a light gray wash with just the slightest hint of light blue.



**2128-945 Soirée
Rectangular Cocktail Table**
48W x 36D x 18H in.

SIGNATURE DESIGNS - 2128 SERIES/SOIRÉE

Contemporary designs crafted from antiqued silver leaf finished metal bases, inset tempered glass tops and shelves in a wire brushed light gray finish



**2128-955 Soirée
Rectangular End Table**
26W x 22D x 26H in.



2128-967 Soirée Console
60W x 16 x 37H in.

SIGNATURE DESIGNS - 2128 SERIES/SOIRÉE

Contemporary designs crafted from antiqued silver leaf finished metal bases, inset tempered glass tops and shelves in a wire brushed light gray finish



2128-989 Soirée
Low Bookcase
56W x 16D x 41H in.

SIGNATURE DESIGNS - 2128 SERIES/SOIRÉE

Contemporary designs crafted from antiqued silver leaf finished metal bases, inset tempered glass tops and shelves in a wire brushed light gray finish



The Soirée low bookcase is finished on both sides so it can float in a setting and can be ganged together to form a dramatic long wall or room divider.

SIGNATURE DESIGNS - 2128 SERIES/SOIRÉE

Contemporary designs crafted from antiqued silver leaf finished metal bases, inset tempered glass tops and shelves in a wire brushed light gray finish



The Soirée etageres are simple architectural forms, with risers in large complete rectangles, clad in silver leaf and framing thick white oak shelves. Riley Woven Arm Chair also shown.

SIGNATURE DESIGNS - 2128 SERIES/SOIRÉE

Contemporary designs crafted from antiqued silver leaf finished metal bases, inset tempered glass tops and shelves in a wire brushed light gray finish



2128-990 Soirée Etagere
40W x 18D x 88H in.



With quartered white oak veneers contrasted against heavily bleached olive ash burl trim, our Mercury Etageres are a modern take on the traditional bookcase or room divider. Please see artisticahome.com for additional room and detail images.



**2025-991C Mercury
Eight-Cube Etageres**
42W x 16D x 88H in.



SIGNATURE DESIGNS - 2158 SERIES/HELLER

Crafted from Mahogany solids and veneers in a rich white wirebrushed and hand rubbed finish based on a Swedish antique, with hand formed Scagliola stone bases accented with polished aluminum



Original designs combining Scagliola stone panels formed over an iron interior structure and offset by applied polished aluminum and completed with a thick Mahogany slab top in a complex wire brushed finish based on a Swedish antique. Scagliola stone dates to the Italian Renaissance and was originally developed as a structural substitute for large architectural forms typically built in marble. Each piece or top is created by hand by skilled artisans and will vary in appearance from piece to piece. Mercury Eight-Cube Etagerie also shown.

SIGNATURE DESIGNS - 2158 SERIES/HELLER

Crafted from Mahogany solids and veneers in a rich white wirebrushed and hand rubbed finish based on a Swedish antique, with hand formed Scagliola stone bases accented with polished aluminum



**2158-945 Heller Rectangular
Cocktail Table**
60W x 36D x 18H in.

SIGNATURE DESIGNS - 2154 SERIES/ALFIE

Crafted from mahogany solids and veneers in a rich white wirebrushed finish, with bases in hand forged solid iron with an antique polished finish



Alfie's textural beauty is derived by combining spoke-shaven mahogany in a wire brushed antique white with hand forged iron in an aged polish that varies from piece to piece and shows the inherent marks of natural steel.

SIGNATURE DESIGNS - 2154 SERIES/ALFIE

Crafted from mahogany solids and veneers in a rich white wirebrushed finish, with bases in hand forged solid iron with an antique polished finish



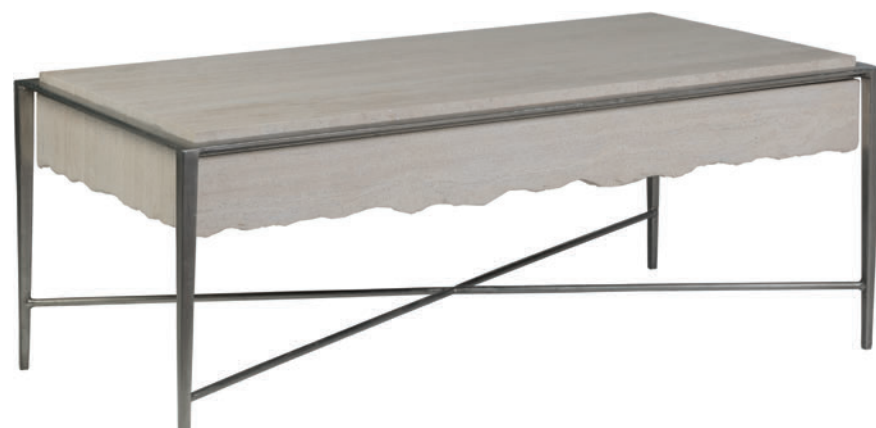
**2154-953 Alfie
Round End Table**
28 diameter x 26H in.

SIGNATURE DESIGNS - 2250 SERIES/EVEREST

Contemporary designs in cast and solid iron in silver leaf, and white travertine tops with live edge aprons



Everest starts with thick slab tops in White Travertine that are given live edge apron and then suspended in iron frames with tapered legs and crossed stretchers. *White Travertine is a product of nature and will vary in appearance from piece to piece. Please see pgs. 278-279 for important information regarding marble.*



**2250-945 Everest
Rectangular Cocktail Table**
49.25W x 26 x 19H in.

SIGNATURE DESIGNS - 2250 SERIES/EVEREST

Contemporary designs in cast and solid iron in silver leaf, and white travertine tops with live edge aprons



2250-950 Everest Square Spot Table
14.75W x 14.75D x 25H in.

SIGNATURE DESIGNS - 2250 SERIES/EVEREST

Contemporary designs in cast and solid iron in silver leaf and white travertine tops with live edge aprons



The Everest shallow console is the group's prettiest piece, with long tapered legs intersected with crossed stretchers.

SIGNATURE DESIGNS - 2250 SERIES/EVEREST

Contemporary designs in cast and solid iron in silver leaf, and white travertine tops with live edge aprons



2250-966 Everest Console
57W x 14.5D x 36H in.

SIGNATURE DESIGNS - 2132 SERIES/CIRRO

Transitional designs with iron bases in a gun metal finish with gray Scagliola stone tops



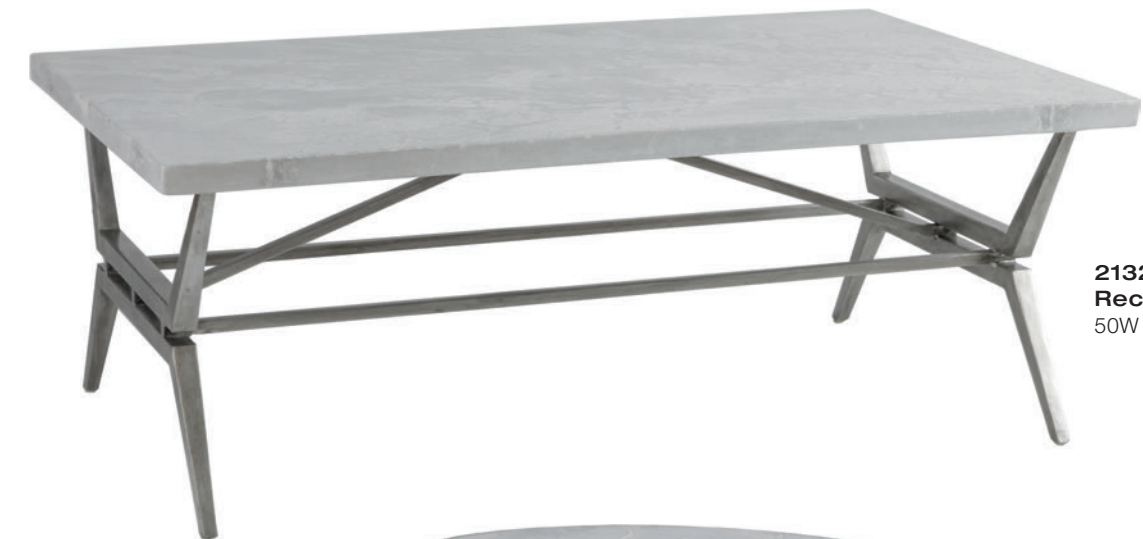
Our Cirro collection boasts thick tops in a swirly gray/white Scagliola stone standing on transitional base designs of forged iron in a gun metal finish. Each top is created by hand by skilled artisans and will vary in appearance from piece to piece.

SIGNATURE DESIGNS - 2132 SERIES/CIRRO

Transitional designs with iron bases in a gun metal finish with gray Scagliola stone tops



Scagliola stone dates to the Italian Renaissance and was originally developed as a structural substitute for large architectural forms typically built in marble. It combines selenite and a variety of marble and stone "dusts" to form a strong, beautiful surface. Each piece or top is created by hand by skilled artisans and will vary in appearance from piece to piece.



2132-945 Cirro Rectangular Cocktail Table
50W x 30D x 18H in.



2132-953 Cirro Round End Table
25W x 25D x 26H in.

SIGNATURE DESIGNS - 2145 SERIES/ARISTO

Iron bases in silver leaf finish with venetian white marble tops



Aristo features whimsical, Space Age-influenced contemporary designs based on clover-like intersecting circles, in venetian white marble standing on simple iron bases in an antiqued silver leaf. *Please see pgs. 278-279 for important information regarding stone surfaces and silver leaf finishes.*

SIGNATURE DESIGNS - 2145 SERIES/ARISTO

Iron bases in silver leaf finish with venetian white marble tops



**2145-953 Aristo
Clover End Table**
26W x 24.5D x 23H in.



Solid slabs of venetian white marble are cut in multi-ellipse patterns to form the unique Aristo silhouettes.



**2145-945 Aristo
Rectangular Cocktail Table**
44.5 x 26D x 18H in.



Our Greta series has been scaled for small spaces without sacrificing design details, with the cocktail and end featuring slim legs in a four-sided taper and a unique interlocking detail where the X is formed in the bases and are perfect counterpoints to the simplicity of the drum-style side tables. Greta Dining Table (pgs. 20-21). Please see pgs. 278-279 for important information regarding white onyx and other stone surfaces.



**2080-945 Greta
Rectangular Cocktail**
44W x 24D x 19H in.



**2080-955 Greta
Rectangular End Table**
26W x 18D x 25.25H in

White Onyx is a product of nature and will vary in coloration and appearance from piece to piece.



Greta's spot tables offer natural materials combined with simplicity of form, with White Onyx drums standing on iron plinths.



**2080-951 Greta
Large Round Spot Table**
18 diameter x 23.5H in.



**2080-950 Greta
Round Spot Table**
14 diameter x 19H in.

White Onyx is a product of nature and will vary in coloration and appearance from piece to piece.

Modern designs in hand shaped and tapered iron bases, inset white onyx tops



**2097-945 Zephyr
Rectangular Cocktail Table**
48W x 36D x 17H in.



**2097-957 Zephyr
Square End Table**
25W x 25D x 25H in.



**2097-966
Zephyr Console**
54W x 18D x 36H in.

Modern designs in hand shaped and tapered iron bases, inset white onyx tops



The sleek, modern forms of our Zephyr series is made unique by first hand shaping and tapering tall posts, and then unconventionally placing them centered on the long sides of the tables rather than at the corners, resulting in dramatic original designs. *White Onyx is a product of nature and will vary in coloration and appearance from piece to piece. Please see pgs. 278-279 for important information regarding white onyx and other stone surfaces.*



Architectural original designs with a joinery motif alternating between square and round iron bar stock and topped in honed, warm sand travertine veneered in blocks. Sand travertine features very soft earth tones streaked with shades of gray, giving it versatility for a wide range of settings.



2135-945 Topa Rectangular Cocktail Table
54W x 33D x 19H in.

Sand Travertine is a product of nature and will vary in coloration and appearance from piece to piece.



2135-967 Topa Console
66W x 16D x 34H in.



2135-955 Topa Rectangular End Table
26W x 22D x 25H in.

SIGNATURE DESIGNS - 2135 SERIES/TOPA

Transitional designs with antiqued silver leaf finished iron bases, sand travertine tops, and tempered glass shelves



Sand travertine is a product of nature and will vary in coloration and appearance from piece to piece. Please see pgs. 278-279 for important information regarding stone surfaces and silver leaf finishes.

SIGNATURE DESIGNS - 2135 SERIES/TOPA

Transitional designs with antiqued silver leaf finished iron bases, sand travertine tops, and tempered glass shelves



2135-991 Topa Etageres
40W x 16D x 88H in.



Topa's etageres feature a Sand Travertine shelf and five inset tempered glass shelves.

SIGNATURE DESIGNS - 2241 SERIES/CANTO

Modern Organic designs crafted from 5mm sawn French Oak veneers and select hardwoods in a honey brown finish with aluminum bases in a bronze finish



Canto boasts contemporary forms in sawn 5mm White Oak veneers with cracks and natural timber hallmarks contrasted against wrapped sheeted brass in a bronze finish.



**2241-945 Canto Rectangular
Cocktail Table**
54W x 28D x 17H in.



2241-955 Canto End Table
27W x 18D x 25H in.



SIGNATURE DESIGNS - 2241 SERIES/CANTO

Modern Organic designs crafted from 5mm sawn French Oak veneers and select hardwoods in a honey brown finish with aluminum bases in a bronze finish



**2241-966
Canto Console**
64W x 14H x 34H in.

SIGNATURE DESIGNS - 2035 SERIES/MASTERSON

Hand-forged iron base in antique iron finish and veneered petrified wood top with live edge. The petrified wood tops will vary in size and shape. The color will also range in various shades of natural earth tones.



2035-967 Masterson Console
42W x 14D x 32H in.

SIGNATURE DESIGNS - 2211 SERIES/ACCOLADE

Heavily distressed and "Barnyard" oak veneers in random planks in a waxed carbon finish, with inset glass and heavily distressed iron accents



The substantial Parsons-styling of the Accolade cocktail and end are complimented by the subtle step effect beneath the glass, with an inset framed in distressed iron. *Accolade* features an aged and distressed wood finish in a range of grays and warm wood tones and will vary in appearance from piece to piece.



2211-947C Accolade Square Cocktail Table
44W x 44D x 17.5H in

SIGNATURE DESIGNS - 2211 SERIES/ACCOLADE

Heavily distressed and "Barnyard" oak veneers in random planks in a waxed carbon finish, with inset glass and heavily distressed iron accents



2211-955C Accolade Rectangular End Table
27W x 25D x 25H in

SIGNATURE DESIGNS - 2211 SERIES/ACCOLADE

Heavily distressed and "Barnyard" oak veneers in random planks in a waxed carbon finish, with inset glass and heavily distressed iron accents



SIGNATURE DESIGNS - 2211 SERIES/ACCOLADE

Heavily distressed and "Barnyard" oak veneers in random planks in a waxed carbon finish, with inset glass and heavily distressed iron accents



2211-966
Accolade Console
64W x 12H x 35.75H in

SIGNATURE DESIGNS - 2210 SERIES/FORAY

Contemporary designs featuring thick heavily distressed "Barnyard" oak veneer tops in random planks in a waxed natural finish, with bases in a heavily distressed iron



Foray's random "Barnyard" oak planks feature knots and other natural hallmarks and are contrasted against distressed, pitted natural iron.



**2210-945 Foray
Rectangular Cocktail Table**
54W x 30D x 17.5H in

SIGNATURE DESIGNS - 2210 SERIES/FORAY

Contemporary designs featuring thick heavily distressed "Barnyard" oak veneer tops in random planks in a waxed natural finish, with bases in a heavily distressed iron



2210-966 Foray Console
54W x 10D x 36H in



**2210-955 Foray
Rectangular End Table**
22W x 26D x 26H in





2077-945C
Precept Rectangular Cocktail
60W x 38D x 18H in.



2077-947C
Precept Square Cocktail
44W x 44D x 18H in.



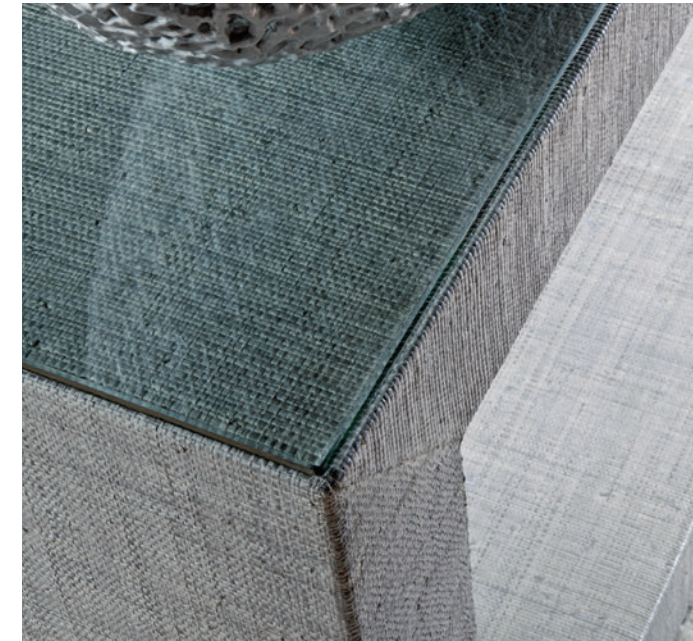
2077-950C
Precept Round End Table
26 diameter x 24H in.



Our Precept occasional tables are studies in joining the textures of nature with simplicity of form. Hand woven raffia is carefully veneered to Parson's style forms, and then finished in a soft French gray and protected with tempered glass lay-on tops. Please see pgs. 278-279 for important information regarding raffia and other woven materials.



The linear form of the Precept Console creates a textural visual frame against any backdrop and allows for display of accessories, books, or even media components. *Please see pgs. 278-279 for important information regarding raffia and other woven materials.*



2077-957C
Precept Square End Table
25W x 25D x 24H in



2077-966C
Precept Console
62W x 16D x 32H in.



SIGNATURE DESIGNS - 2129 SERIES/CORTONA

Traditional designs with heavily hammered and textured iron base in a bronze foil finish with glass tops



Substantial, heavily hammered hand forged occasional in a combination of iron and aluminum that offers rustic, masculine refinement. The cocktail is topped by a 3/4-inch glass top with flat polished edge, while the end and console feature inset beveled and tempered tops. Available in finish as shown only.



2129-945C Cortona Rectangular Cocktail Table with Glass Top
54W x 38D x 19.25H in.

SIGNATURE DESIGNS - 2129 SERIES/CORTONA

Traditional designs with heavily hammered and textured iron base in a bronze foil finish with glass tops



2129-967C Cortona Console with Glass Top
53.5W x 16D x 36.5H in.



2129-955C Cortona End Table with Glass Top
22W x 26D x 26H in.

SIGNATURE DESIGNS - 2174 SERIES/TREVILLE

Iron bases finished in silver leaf with Blue Forest marble tops and inset tempered glass shelves



Treville's simple, linear iron bases are contrasted with heavily figured Blue Forest Marble to dramatic effect. *Blue Forest Marble is a product of nature and will vary greatly in appearance and coloration from piece to piece. Please see pgs. 278-279 for important information marble and other natural materials.*



**2174-945 Treville Rectangular
Cocktail Table**
48W x 36D x 18H in



SIGNATURE DESIGNS - 2174 SERIES/TREVILLE

Iron bases finished in silver leaf with Blue Forest marble tops and inset tempered glass shelves



2174-966 Treville Console
54W x 16D x 36H in



2174-953 Treville Round End Table
26 diameter x 25H in



SIGNATURE DESIGNS - 2117 SERIES/CHIAVARI

Traditional designs crafted from walnut veneers, walnut and mahogany solids in a bleached walnut finish with ferrules and custom lost wax cast solid brass hardware in an antique finish



Original, traditional Northern Italian designs in mahogany solids and outrageous flat-cut European walnut veneers with rich figuring. These pieces are designed and finished to appear as antiques, meaning they show a medium level of distress and signs of age, with subtle bleaching across the veneers to imitate the variations of centuries of light exposure. They feature original lost wax-casted solid brass hardware and receive a coating of English black wax across the entire piece, completing the antique effect. Chiavari Three Drawer Hall Chest shown in background and page 104.



2117-945 Chiavari Rectangular Cocktail Table
44W x 33D x 19.5H in

SIGNATURE DESIGNS - 2117 SERIES/CHIAVARI

Traditional designs crafted from walnut veneers, walnut and mahogany solids in a bleached walnut finish with ferrules and custom lost wax cast solid brass hardware in an antique finish



2117-957 Chiavari Square End Table
25W x 25D x 26H in



(end view)

The Chiavari rectangular cocktail features deep drawers unusually indexed on each end, showcasing the rich veneer work and beautiful solid brass hardware.

SIGNATURE DESIGNS - 2117 SERIES/CHIAVARI

Traditional designs crafted from walnut veneers, walnut and mahogany solids in a bleached walnut finish, ferrules and custom lost wax cast solid brass hardware in an antique finish



The sleek legs of the Chiavari console further emphasize the soft concave shape across the case and are completed with solid brass ferrules.

SIGNATURE DESIGNS - 2117 SERIES/CHIAVARI

Traditional designs crafted from walnut veneers, walnut and mahogany solids in a bleached walnut finish, ferrules and custom lost wax cast solid brass hardware in an antique finish



2117-966 Chiavari Console
48W x 16D x 36H in



The Marlowe pieces are finished to appear as antiques. They receive a coating of English black wax across the entire surface, completing the antique effect.



**2157-953 Marlowe
Round End Table**
28 diameter x 26H in.

SIGNATURE DESIGNS - 2121 SERIES/LILT

Contemporary design crafted from mahogany solids and oak veneers in a wire brushed natural wood tone with true parchment on top and pedestal



The Lilt's parchment top has been intentionally aged and finished to appear as an antique.



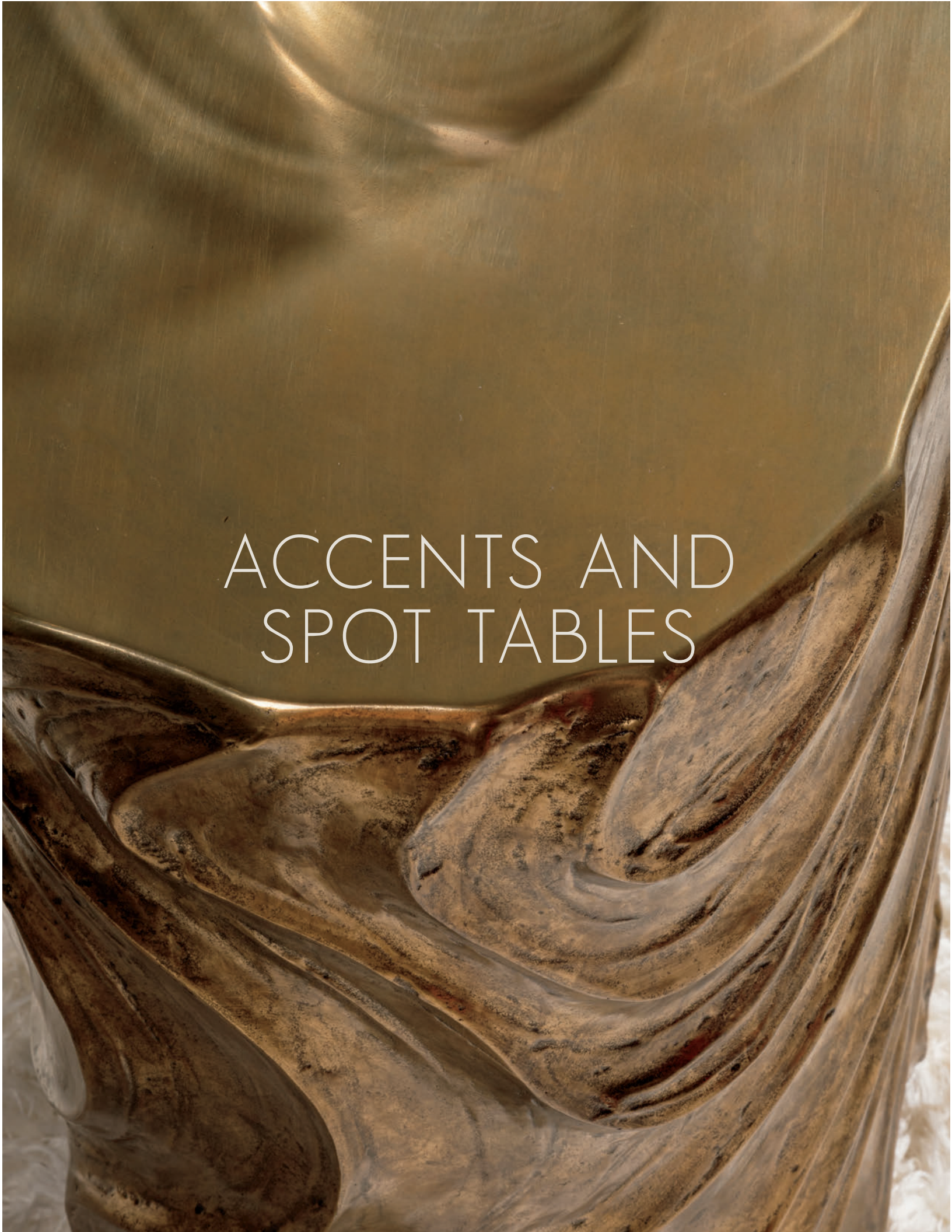
2121-967 Lilt Console
48W x 14D x 38H in.

SIGNATURE DESIGNS - 2121 SERIES/LILT

Contemporary design crafted from mahogany solids and oak veneers in a wire brushed natural wood tone with true parchment on top and pedestal



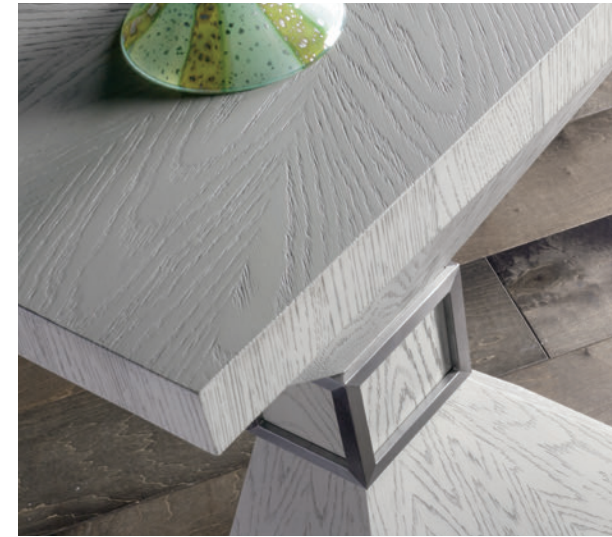
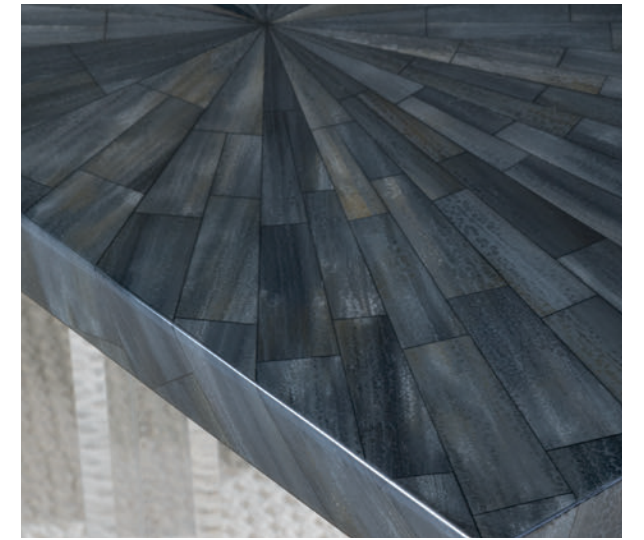
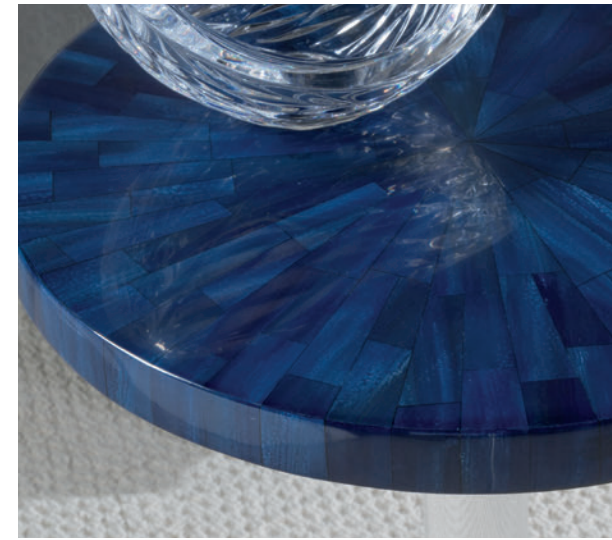
Inspired by a 1930s Parisian antique, this piece has been faithfully executed to period standards, with true parchment yellowed in an authentic aged appearance, and quartered oak insets and base finished to appear like aged natural oak solids.



ACCENTS AND SPOT TABLES

SIGNATURE DESIGNS - ACCENTS AND SPOT TABLES

An array of striking silhouettes in unusual materials apropos for a wide variety of settings



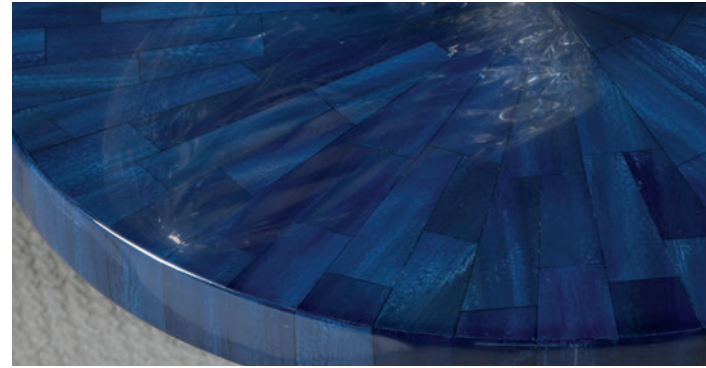
Unusual and sometimes rare materials are utilized in this collection to achieve our unique designs. *For additional information about specific materials, please see pages 278-279 before ordering.*

SIGNATURE DESIGNS - 2205 SERIES/INVICTA

Contemporary original designs in select hardwood and maple veneers, a rich navy blue painted finish with low sheen, and navy faux horn, acrylic and polished nickel accents



2205-950 Invicta Round Spot Table
16 diameter x 26H in.



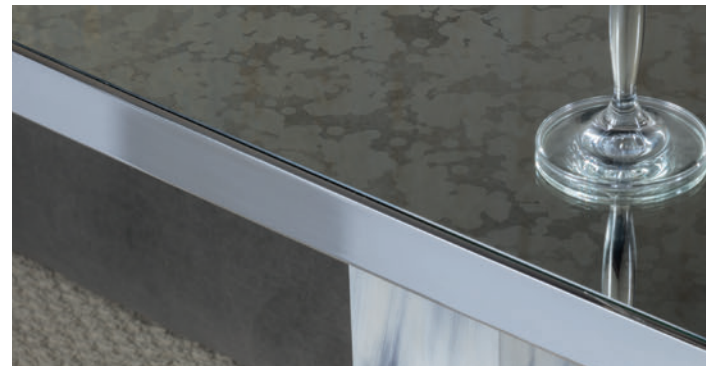
Invicta features a top and base of faux horn in a radial pattern of brilliant shades of blue, set against transparent acrylic. Invicta Hall Chest shown on front cover and pages 62 and 63 .

SIGNATURE DESIGNS - 2206 SERIES/TOUCHE

Brutalist stacked blocks design in select hardwood, with faux horn in a bone coloration, antique mirror, and stainless steel accents



2206-950 Touché Rectangular Spot Table
18W x 12D x 25H in.



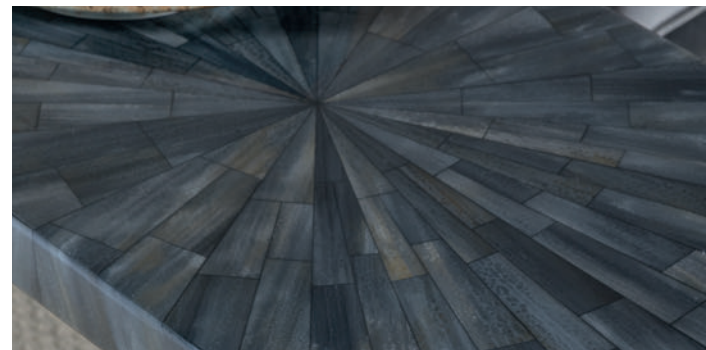
Touché's Brutalist form is softened by the use of subtle faux horn and gentle aging of the mirrored top.

SIGNATURE DESIGNS - 2207 SERIES/LITMUS

Neoclassical original design in select hardwoods, with faux horn in a dusky gray coloration inlaid in an elliptical starburst pattern and acrylic posts clasped in stainless steel



2207-950 Litmus Rectangular Spot Table
24W x 18D x 25H in.



The radial starbursts of the Litmus employ a seemingly endless range of grays in the faux horn, contrasted against the modern sensibility of acrylic.

SIGNATURE DESIGNS - 2243 SERIES/BELLO

Contemporary designs using faux horn in a white/gray bone coloration



2243-950 Bello Round Spot Table
18 diameter x 21H in.



The Bello accent tables are veneered in faux horn tiles in a bone coloration hand painted by artists.



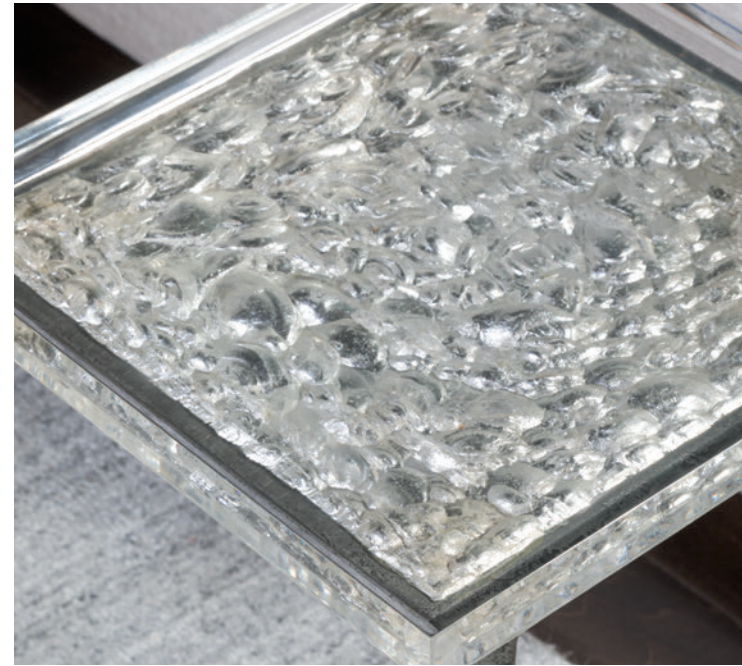
2243-951 Bello Faceted Drum Table
18.25 diameter x 21.75H in.



Bello's faux horn will vary in appearance from piece to piece.

SIGNATURE DESIGNS - 2252 SERIES/MONTREAUX

Transitional design in solid and forged iron in a pitted antique iron finish, with top in acrylic and silver leaf

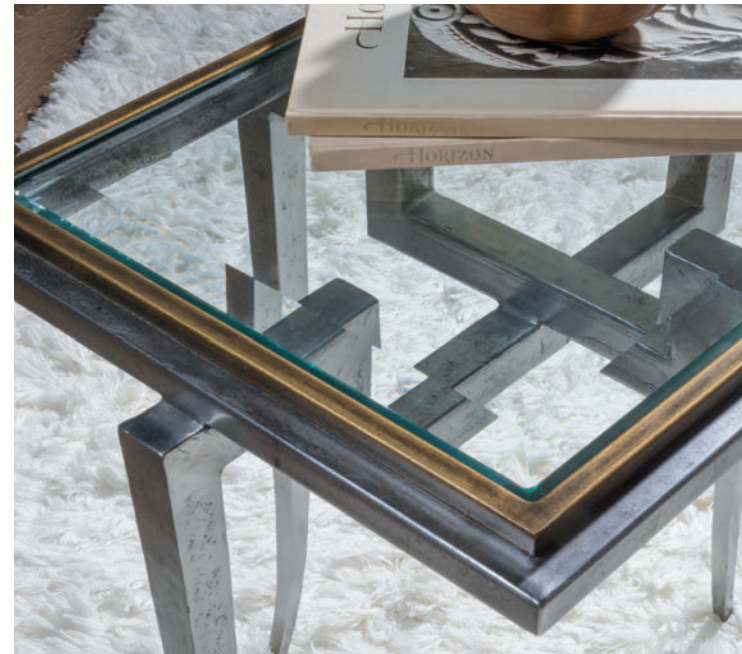


2252-950 Montreaux Spot Table
12W x 12D x 24H in.

Montreaux's stunning top is achieved by sculpting the underside of the acrylic by hand and then adding silver leafing. *Each top will vary in appearance from piece to piece.*

SIGNATURE DESIGNS - 2176 SERIES/HUXLEY

Natural polished finished iron base with bronze accents



2176-951C Huxley Rectangular Spot Table
24W x 20D x 24H in.

Huxley's natural steel finish shows remnants of mill scale and the inherent markings of hot rolled iron.

SIGNATURE DESIGNS - 2177 SERIES/MORIARTY

Polished century marble, iron, cast zinc top and post clad in bronze



2177-950 Moriarty Spot Table
15 W x 15D x 23H in.

The Moriarty is an original design based on a puddle of molten bronze. The top is a casted replica of the original spill, clad in bronze, and stands on a solid base of Century marble, with a brass post joining the two.

SIGNATURE DESIGNS - 2178 SERIES/PASCAL

Sculptural base clad in zinc, with gray Scagliola stone inset top



2178-950 Pascal Round Spot Table
18 inch diameter x 23.5H in.

The master for the Pascal mold was formed with bare hands, and the intentional impasto of the zinc texture creates an organic, original sculpture.

Scagliola stone dates to the Italian Renaissance and was originally developed as a structural substitute for large architectural forms typically built in marble. It combines selenite and a variety of marble and stone "dusts" to form a strong, beautiful surface. *Each piece or top is created by hand by skilled artisans and will vary in appearance from piece to piece.*

SIGNATURE DESIGNS - 2249 SERIES/BAROLO

Modern sculptural design with cast base electroformed in antique bronze, with acrylic and gold leaf top



2249-950 Barolo Spot Table
12 inch diameter x 24H in.

Barolo is constructed of a cast base coated in antiqued bronze, with an acrylic top that is sculpted from below and finished in gold leaf. *Each Barolo top will vary in appearance from piece to piece.*

SIGNATURE DESIGNS - 2180 SERIES/CATALAN

Original sculpture in fiber-cast resin clad in bronze



2180-950 Catalan Oval Drum Table
15.25W x 11.5D x 24.5H in.

Original, whimsical sculpture reminiscent of the architecture of Catalonia, with a fiber-casted core clad in a thick coating of electroformed bronze.

SIGNATURE DESIGNS - 2247 SERIES/THORNTON

Modern sculptural design with a cast base electroformed in antique bronze, inset with natural barnyard oak veneers



2247-950 Thornton Side Table
25W x 18D x 24H in.

Thornton is an exploration of the elliptical form, with a cast base clad in organically textured bronze contrasted against "Barnyard" oak plank veneers.

SIGNATURE DESIGNS - 2179 SERIES/CLEMENT

Hammered and textured antique iron, white oak base, Desert Scagliola top



2179-952 Clement Oval Spot Table
21W x 16.25D x 25H in.

The Clement spot features an oval top with reverse chamfered edge in Scagliola stone supported by a base combining pitted natural iron and rustic White Oak.

SIGNATURE DESIGNS - 2251 SERIES/WILDER

Contemporary design in hand forged iron and Desert Scagliola stone



2251-950 Wilder Oval Spot Table
22W x 13D x 24H in.

Oval top in Desert Scagliola stone with a soft reverse chamfer edge profile standing atop a hand forged and polished iron base with a sculptural form.

SIGNATURE DESIGNS - 2248 SERIES/VEGA

Contemporary design crafted from hammered iron in a pitted antique iron finish, with Century marble top and base



2248-950 Vega Round Spot Table
16 inch diameter x 25H in.

Century Marble top and base brought together with a wishbone of hand forged iron in a hammered and textured natural iron finish.

SIGNATURE DESIGNS - 2184 SERIES/CLARENCE

Antiqued silver finished iron base with Milky Quartz veneered stone top



2184-951 Clarence Round Spot Table
16 inch diameter x 23H in.

The Clarence is a rustic form in hammered and tapered iron, and featuring a live-edge top in rare milky quartzite. *Milky quartzite is a product of nature and will vary in coloration and appearance from piece to piece.*

SIGNATURE DESIGNS - 2253 SERIES/ERGO

Contemporary design with an iron base in a silver leaf finish and veneered white travertine tops



2253-950 Ergo Marble and Metal Tiered Hexagonal End Table
19.5W x 11.5 x 25.5H in.

Ergo is a diminutive spot table with hexagonal White Travertine tiers suspended by iron. *White Travertine is a product of nature and will vary from piece to piece.*

SIGNATURE DESIGNS - 2185 SERIES/MICHEL

Antiqued silver finished iron base with true parchment tray top



2185-951 Michel Rectangular Tray Spot Table
12W x 24D x 25.5H in.



Goatskin is known as parchment or vellum when veneered to a surface; as a product of nature, it will vary in coloration and appearance from piece to piece.

SIGNATURE DESIGNS - 2186 SERIES/REPAREE

Distressed charcoal finished true parchment top and stainless steel base



2186-951 Repartee Round Spot Table
16 inch diameter x 25.25H in.



Goatskin is known as parchment or vellum when veneered to a surface; as a product of nature, it will vary in coloration and appearance from piece to piece.

SIGNATURE DESIGNS - 2189 SERIES/MIMI

White Agate stone base with Troca shell inlay on top



2189-950 Mimi Round Spot Table
14 inch diameter x 18.5H in.



Troca Shell is a product of nature and will vary in coloration and appearance from piece to piece. Please see pages 278-279 for important information regarding exotic materials.

SIGNATURE DESIGNS - 2190 SERIES/SALVO

Antiqued silver finished iron base with Gray Mist stone top and shelf



2190-951 Salvo Rectangular Tier Spot Table
14W x 22.5D x 23H in.



Gray Mist Stone is a product of nature and will vary in coloration and appearance from piece to piece. Please see pages 278-279 for important information regarding stone surfaces.

SIGNATURE DESIGNS - 2159 SERIES/OTTO

White Scagliola stone top and pedestal on a hand shaped iron base in an antiqued polished iron base



**2159-955 Otto
Round Spot Table**
15W x 18.75D x 27H in.

Original design in hand-shaped iron dressed in an antique polished finish, inset with rounds of gray Scagliola stone. Scagliola stone dates to the Italian Renaissance and was originally developed as a structural substitute for large architectural forms typically built in marble. Each piece or top is created by hand by skilled artisans and will vary in appearance from piece to piece.

SIGNATURE DESIGNS - 2067 SERIES/LEO

Hand-forged iron bases and gray marble tops



**2067-951 Leo
Spot Table**
12.5W x 16.25D x 25H in.



Original, refined industrial styling in our Leo combination: gray South Pacific marble atop iron in a silver-gray finish. Gray marble is a product of nature and will vary in appearance from piece to piece.

SIGNATURE DESIGNS - 2067 SERIES/LEO NEST

Hand-forged iron bases and gray marble tops



**2067-955 Leo
Small Nest Table**
22.5W x 14.75D x 23H in.



**2067-956 Leo
Large Nest Table**
26W x 18D x 27H in.



*2067-955/956
Leo Nest Tables
shown nested*

SIGNATURE DESIGNS - 2025 SERIES/MERCURY

Bleached olive ash burl, white oak veneers and select hardwoods



2025-950 Mercury Spot Table
20 diameter x 23.75H in.

SIGNATURE DESIGNS - 2036 SERIES/TRUNK SEGMENTS GOLD

Cast Natureform 'tree trunks' with inlaid fossilized white clam shell tops



Our Trunk Segment silhouettes are exactly that: true sections of tree trunks that have been replicated as natureform castings and gilded in silver and gold leaf, and then inset with fossilized white clam shells patterned after heartwood. *Trunk Segment dining, pg. 32. Please see pgs. 278-279 for important information regarding fossilized materials.*



2036-950 Trunk Segment Spot Table - Gold Leaf
15W x 14D x 16H in.



2036-952 Trunk Segment Side Table - Gold Leaf
19W x 21D x 20H in.



2036-951 Trunk Segment Accent Table - Gold Leaf
15W x 14D x 23H in.

SIGNATURE DESIGNS - 2037 SERIES/TRUNK SEGMENTS SILVER

Cast Natureform 'tree trunks' with inlaid fossilized white clam shell tops



2037-950 Trunk Segment Spot Table - Silver Leaf
15W x 14D x 16H in.



2037-952 Trunk Segment Side Table - Silver Leaf
19W x 21D x 20H in.



2037-951 Trunk Segment Accent Table - Silver Leaf
15W x 14D x 23H in.

SIGNATURE DESIGNS - 2053 SERIES/SERGIO

Hand forged iron base in champagne foil finish and white capiz shell inlay top



2053-950 Sergio Spot Table
18 diameter x 20.5H in.

SIGNATURE DESIGNS - 2066 SERIES/CORRINA

Hand forged iron base, fossilized coral top



2066-955 Corrina Spot Table
18W x 12D x 20H in.

Please see pgs. 278-279 for important information regarding fossilized materials.



SIGNATURE DESIGNS - 2063 SERIES/CALYPSO

Contemporary designs crafted from veneered true Parrot fish skin, with a high sheen acrylic coating, and hand forged iron bases in antiqued gold leaf



2063-950 Calypso Round Spot Table
16 diameter x 22H in.

Please see pgs. 278-279 for important information regarding fish skin, capiz shell, and other exotic materials.

SIGNATURE DESIGNS - 2134 SERIES/ISIDORA

Transitional designs with pewter finished iron base with turquoise top



2134-951 Isidora Turquoise Spot Table
12 diameter x 22H in.



Simple Art Nouveau iron base topped with spectacular Arizona turquoise suspended in resin.

SIGNATURE DESIGNS - 2064 SERIES/SULU

Contemporary designs with true sea snake skins inlaid in polished white resin protected by acrylic, with stainless steel bases and tempered glass



2064-951 Sulu Sea Snake Rectangular Spot Table
20W x 12D x 22H in.

SIGNATURE DESIGNS - 2030 SERIES

Various designs in fossilized white clam shell and iron



2030-950 Gregory Spot Table
20W x 17D x 26.75H in.



2030-952 Tate Spot Table
18 diameter x 21H in

Please see pgs. 278-279 for important information regarding fossilized materials.

SIGNATURE DESIGNS - 2030 SERIES

Various designs in fossilized white clam shell and iron



2030-955 Frick Spot Table
22W x 14D x 22H in.



2030-957 Gardner Spot Table
18W x 18D x 23H in.

Please see pgs. 278-279 for important information regarding fossilized materials.

SIGNATURE DESIGNS - 2028 SERIES/TETON

Silver leaf finished faux antler base and antique mirror



**2028-952C
Teton Spot Table**
24 diameter x 25H in.

SIGNATURE DESIGNS - 2032 SERIES/CAMEO

Hand-forged iron bases in antiqued iron finish, Century marble tops



**2032-952
Cameo Spot Table**
18 diameter x 21.75H in.

SIGNATURE DESIGNS - 2054 SERIES/ZORBA

Hand-turned Century marble bowls and iron base in an antiqued iron finish



**2054-951 Zorba
Round Spot Table**
16W x 16D x 24H in.

SIGNATURE DESIGNS - 2035 SERIES/PECK

This series features hand-forged iron bases in antique iron finish and petrified wood tops. The petrified wood tops will vary in size and shape. The color will also range in various shades of natural earth tones.



**2035-951
Shane Spot Table**
13W x 14D x 25H in.

Please see pgs. 278-279 for important information regarding Century marble and other stone surfaces.

Please see pgs. 278-279 for important information regarding Century marble and other stone surfaces.

SIGNATURE DESIGNS - 2035 SERIES/PECK

This series features hand-forged iron bases in antique iron finish and petrified wood tops. The petrified wood tops will vary in size and shape. The color will also range in various shades of natural earth tones.



**2035-952
Spec Spot Table**
20W x 17D x 26.75H in.



**2035-954
Kane Spot Table**
20W x 19D x 26H in.



**2035-953
Valance Spot Table**
20W x 20D x 20H in



**2035-955
Wyatt Spot Table**
16W x 10D x 20H in.

Please see pgs. 278-279 for important information regarding petrified wood.

Please see pgs. 278-279 for important information regarding petrified wood.



These diminutive tier tables are reminiscent of haute couture footwear, belts and hand bags - and for good reason. They are veneered in either light gray or tobacco-toned true freshwater snake skins, clear coated with protective acrylic, and assembled onto a contrasting nickel pillar. Please see pgs. 278-279 for important information regarding freshwater snake skin and other exotic materials.



**2033-950 Barito
Round Spot Table**
14 diameter x 19H in.



**2033-952 Barito
Round Spot Table**
14 diameter x 19H in.

SIGNATURE DESIGNS - 2182 SERIES/BORA BLACK

Contemporary bunching table with concentric vines inlaid in black resin



The concentric visual delight of Bora's inlaid vines are especially attractive when bunched in pairs, fours, or even sets of six. *Because the straw-like dried vines used in Bora are a product of nature, each will vary in coloration across the table and from piece to piece.*



**2182-951 Bora Black
Spot Bunching Table**
14W x 14D x 18.5H in

SIGNATURE DESIGNS - 2183 SERIES/BORA WHITE

Contemporary bunching table with concentric vines inlaid in white resin



The straw-like vines used in both the black and white versions of Bora are the same material in the same color range. The difference is created in the resin suspension, resulting in distinctly different colorations.



**2183-951 Bora White
Spot Bunching Table**
14W x 14D x 18.5H in





When sliced and inlaid, Turnsole vine creates a heathered effect, contrasting beautifully against the rattan inlay.



**2127-951 Isabella
Rectangular Spot Table**
19W x 14D x 21H in.



Simple stainless tier table base contrasted against sliced Turnsole vine in a near-black finish, with contrasting veneered rattan slices in an asymmetrical starburst pattern.



2133-950 Demetria Spot Table
18.25W x 12D x 23.25H in.



An elegant drinks table in Regency styling, featuring a shimmering top in veneered abalone and iron base in gold leaf.

An array of striking silhouettes in unusual materials apropos for a wide variety of upholstery settings



DESKS



Unusual and sometimes rare materials are utilized in this collection to achieve our unique designs. *For additional information about specific materials, please see pages 278-279 before ordering.*

SIGNATURE DESIGNS - 2156 SERIES/CUMULUS CAPIZ

Transitional iron styles in a champagne foil finish with Capiz shell shelves and tempered glass tops



Our Cumulus Capiz series gets its name from the signature floating surfaces and shelves of Capiz shell suspended in airy frames clad in a champagne foil finish. Please see pgs. 278-279 for important information regarding capiz shell and other exotic materials.

SIGNATURE DESIGNS - 2156 SERIES/CUMULUS CAPIZ

Transitional iron styles in a champagne foil finish with Capiz shell shelves and tempered glass tops



The iridescence of Capiz shell is the star of this unusual desk design, featuring a floating shelf beneath the writing surface. Please see pages 278-279 for important information regarding Capiz shell and other exotic materials.



2156-933C Cumulus Capiz Writing Table
48W x 26D x 30H in.

Transitional iron styles in gold foil finish with fossilized crystal stone shelves and tempered lay on glass tops



Our Cumulus series gets its name from the signature floating surfaces and shelves of white crystal stone suspended in airy iron frames gilded in a gold foil finish. Please see pgs. 278-279 for important information regarding crystal stone and other fossilized materials and stone surfaces.

Transitional iron styles in gold foil finish with fossilized crystal stone shelves and tempered lay on glass tops



The ivory and warm tones of White Crystal stone are a balanced counterpoint to the bright gold foil on the metal base. *White Crystal stone is a product of nature and will vary in coloration and appearance from piece to piece. Please see pages 278-279 for important information about stone surfaces.*



2024-933C
Cumulus Writing Table
48W x 26D x 30H in.

SIGNATURE DESIGNS - 2055 SERIES/CREDO

Mahogany and European beech solids and veneers in a warm silver leaf finish



Credo Desk shown with the 2087-880-01 Melody Side Chair. See pg. 27 for additional information.

SIGNATURE DESIGNS - 2025 SERIES/MERCURY

Bleached olive ash burl, white oak veneers and select hardwoods



Mercury Desk shown with the 2057-880-41-01 Haiku Side Chair. Please see page 41 of our Cohesion catalog for additional information.



2055-933 Credo Desk
46W x 30D x 33.75H in.

*Credo occasional and cases, pgs. 96-99.
Please see pgs. 278-279 for important
information regarding silver leaf finishes.
Please see artisticahome.com for additional
detail images.*



2025-933 Mercury Desk
48W x 26D x 35H in.

SIGNATURE DESIGNS - 2062 SERIES/PENELOPE

Regency form in mahogany solids and white oak veneers with hardware in bright nickel



The classic Regency silhouette is brought into the 21st Century by the dark slate gray we've applied to the flat cut White Oak veneers, with subtle gray dust liming, and made remarkable by the stunning Greek key hardware in bright nickel. The center drawer features a drop-down face for keyboard access.

SIGNATURE DESIGNS - 2062 SERIES/PENELOPE

Regency form in mahogany solids and white oak veneers with hardware in bright nickel



2062-933 Penelope Desk
60W x 30D x 30H in.



FOSSILIZED MATERIALS

Petrified wood, Fossilized Clam and Coral

Petrified wood is a crystallized glass-like fossil of a tree, with the appearance of the wood structure preserved. The fossilization process begins when trees become buried in sediment. Mineral-rich water passing through the sediment carries away the decaying wood molecules and replaces them with minerals - usually silica. Over thousands of years, the minerals crystallize, producing a metamorphic stone fossil with the appearance of wood. Fossilized clam shell and coral (coraline) are formed in much the same fashion, retaining much of their original appearance after being encased in silica.

The South Pacific and Indonesia are the most volcanically active regions in the world. These tables are produced with specimens hand-picked from the ground surface, not mined, and their collection does no harm to the environment. *Because these tables are made from rare collected petrified specimens, each table top is guaranteed to vary greatly in color and shape, and every table top is completely unique.*



LEAF FINISHES

Our leaf and foil finishes utilize precious metals that have been refined to very fine sheets and then hand applied to various surfaces. These special finishes will show the hand work necessary to achieve their lustrous appearance.



STONE SURFACES

Travertine, Marble, and Onyx

These materials are metamorphic rocks that are quarried from various regions of the world. While we strive to classify these materials into consistent color ranges, certain stones — especially travertines and onyxes - can vary greatly in coloration across a single slab. *As products of nature, our stone tops will vary in coloration from piece to piece.*



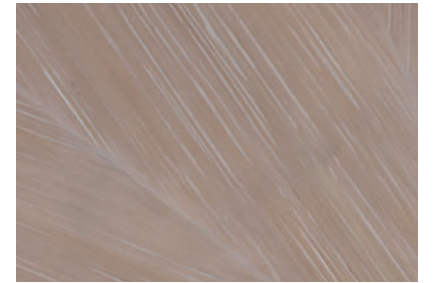
SHELL MATERIALS

Capiz, Troca, and Turritella Seashells

We utilize various portions and slices of these three seashells in a range of Artistica products, as both inlays and veneered surfaces. *As products of nature, they will vary in appearance and coloration from piece to piece.*

CRUSHED BAMBOO

Crushed bamboo veneers are created by first slicing bamboo poles and then flattening their curved surfaces before veneer application to a substrate. The crushing process creates fine lengthwise cracks that add to the organic appearance of this versatile material. Though these cracks do not compromise the strength of the surface material, they are to be expected due to the structural properties of bamboo.



POLISHED METALS

Stainless Steel and Brass

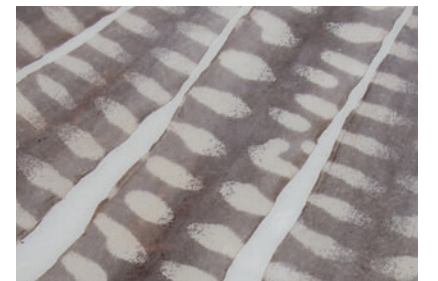
Our bright metal surfaces are buffed by hand using descending grades of polishing abrasives, ultimately resulting in a mirror-like appearance. Small polish and other surface marks are to be expected.



EXOTICS

Snake and Fish Skins

Like the world of fashion, we utilize these special and highly-sought materials to make bold style statements in our accent furniture. *As products of nature, these materials will vary in appearance from piece to piece.*



WOVEN MATERIALS

Abaca, Raffia and Lampakanai

We use a variety of natural fibers in our designs, both as structural weaves and as veneers. *As products of nature, these materials will vary in appearance from piece to piece.*



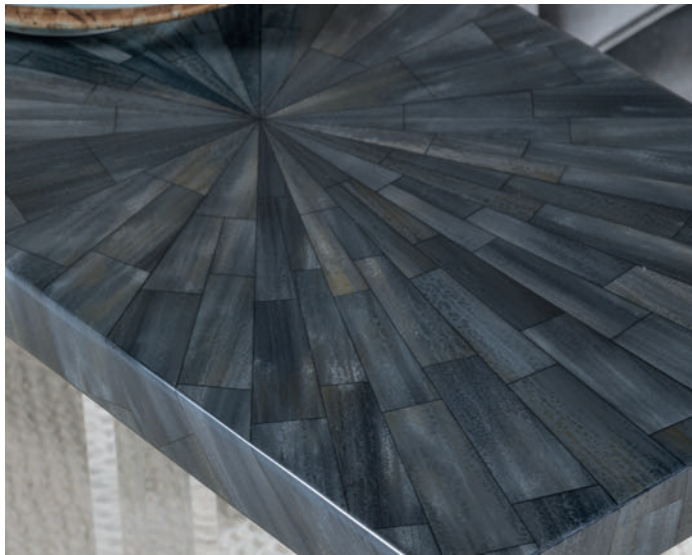
ANTIQUE MIRROR

We use several different styles of hand-distressed antique mirror in our pieces. *Because these mirrors are aged by an artist's hand, they will vary in appearance from piece to piece.*



SIGNATURE DESIGNS INDEX

Our Signature Designs feature unusual and sometimes rare materials utilized to achieve unique designs. Boasting an eclectic mix of striking original silhouettes for every room of the home, these designs utilize a range of distinctive and exotic materials resulting in stunning presentations of natural beauty and innate elegance.



SIGNATURE DESIGNS INDEX



2022-949C Colette Oval Cocktail
42.25W x 33D x 19H in.
Shown on pages: 166 and 167



2022-950C Colette Round End Table
25.5 diameter x 26H in.
Shown on pages: 166 and 167



2022-958 Colette Round Nesting Tables
19 diameter x 24H in.
Shown on page: 168



2023-870C Crystal Stone Round Dining Table
48 diameter x 30H in.
Shown on pages: 30 and 31



2023-943 Crystal Stone Round Cocktail
36 diameter x 19H in.
Shown on pages: 154 and 155



2023-950 Crystal Stone Round End Table
26 diameter x 24.5H in.
Shown on page: 154



2024-933C Cumulus Writing Table
48W x 26D x 30H in.
Shown on pages: 272 and 273



2024-941C Cumulus Large Round Cocktail
50 inch diameter x 18.5H in.
Shown on page: 148



2024-943C Cumulus Round Cocktail
41 inch diameter x 18.5H in.
Shown on page: 151



2024-945C Cumulus Rectangular Cocktail
44W x 30D x 18.5H in.
Shown on page: 150



2024-949C Cumulus Large Rectangular Cocktail
60W x 40D x 18.5H in.
Shown on page: 149



2024-955C Cumulus Tier Table
24W x 16D x 24H in.
Shown on pages: 150 and 152



2024-958 Cumulus Triangular Tier Table
25.25W x 16D x 26H in.
Shown on pages: 151 and 153



2025-907 Mercury Media Credenza
59.25W x 18D x 34H in.
Shown on pages: 94 and 95



2025-908 Mercury Large Media Credenza
87.5W x 18D x 34H in.
Shown on pages: 92 and 93



2025-933 Mercury Desk
48W x 26D x 35H in.
Shown on page: 275



2025-950 Mercury Fossilized Clam Spot Table
20 diameter x 23.75H in.
Shown on page: 249



2025-991C Mercury Eight-Cube Etagere
42W x 16D x 88H in.
Shown on pages: 188 and 189



2028-952C Teton Spot Table
24 diameter x 25H in.
Shown on page: 256



2030-950 Gregory Spot Table
20W x 17D x 26.75H in.
Shown on page: 254



2030-952 Tate Spot Table
18 diameter x 21H in.
Shown on page: 254



2030-955 Frick Spot Table
22W x 14D x 22H in.
Shown on page: 255



2030-957 Gardner Spot Table
18W x 18D x 23H in.
Shown on page: 255



2032-952 Cameo Spot Table
18 diameter x 21.75H in.
Shown on page: 257



2033-950 Barito Round Spot Table
14 diameter x 19H in.
Shown on pages: 260 and 261



2033-952 Barito Round Spot Table
14 diameter x 19H in.
Shown on pages: 260 and 261



2035-951 Shane Spot Table
13W x 14D x 25H in.
Shown on page: 257



2035-952 Spec Spot Table
20W x 17D x 26.75H in.
Shown on page: 258



2035-953 Valance Spot Table
20W x 20D x 20H in.
Shown on page: 258



2035-954 Kane Spot Table
20W x 19D x 26H in.
Shown on page: 259



2035-955 Wyatt Spot Table
16W x 10D x 20H in.
Shown on page: 259



2035-967 Masterson Console
42W x 14D x 32H in.
Shown on page: 213



2036-870-56C Trunk Segment Dining Table
with Glass Top - Gold Leaf
56 diameter x 30H in.
Shown on page: 32



2036-950 Trunk Segment Spot Table -
Gold Leaf
15W x 14D x 16H in.
Shown on page: 250



2036-951 Trunk Segment Accent Table -
Gold Leaf
15W x 14D x 23H in.
Shown on page: 250



2036-952 Trunk Segment Side Table -
Gold Leaf
19W x 21D x 20H in.
Shown on page: 250



2037-870-56C Trunk Segment Dining Table
with Glass Top - Silver Leaf
56 diameter x 30H in.
Shown on page: 33



2037-950 Trunk Segment Spot Table -
Silver Leaf
15W x 14D x 16H in.
Shown on page: 251



2037-951 Trunk Segment Accent Table -
Silver Leaf
15W x 14D x 23H in.
Shown on page: 251



2037-952 Trunk Segment Side Table - Silver Leaf
19W x 21D x 20H in.
Shown on page: 251



2041-870-60C Cityscape Dining Table
with Glass Top
60 diameter x 30.25H in.
Shown on pages: 18 and 19



2041-945C Cityscape
Rectangular Cocktail Table
49.75W x 36.75D x 17H in.
Shown on page: 164



2041-966C Cityscape Console
54W x 14D x 36H in.
Shown on page: 165



2042-870C Casanova Round Dining Table
54 diameter x 29.5H in.
Shown on pages: 22 and 23



2043-961C Casanova Bar Cabinet
36W x 18D x 58H in.
Shown on pages: 25 and 26



2044-869C Casanova Sideboard
68W x 18D x 36H in.
Shown on page: 24



2050-943C Gravitas Round Cocktail
42 diameter x 18H in.
Shown on pages: 136 and 137



2050-950 Gravitas Round Spot Table
18 diameter x 20H in.
Shown on pages: 138 and 139



2050-953C Gravitas Round End Table
26 diameter x 24.5H in.
Shown on pages: 136 and 137



2050-966C Gravitas Console
41.75W x 17.5D x 36H in.
Shown on page: 139



2053-950 Sergio Spot Table
18 diameter x 20.5H in.
Shown on page: 252



2054-951 Zorba Round Spot Table
16W x 16D x 24H in.
Shown on page: 256



2055-907 Credo Entertainment Console
70.5W x 18.25D x 30H in.
Shown on pages: 96, 97 and 98



2055-933 Credo Desk
46W x 30D x 33.75H in.
Shown on page: 274



2055-973 Credo Hall Chest
38W x 18D x 36.75H in.
Shown on pages: 98 and 99



2060-945 Impresario Rectangular Cocktail
54.25W x 33D x 17.75H in.
Shown on pages: 156 and 157



2060-957 Impresario Square End Table
26W x 26D x 23.5H in.
Shown on page: 157



2060-966 Impresario Console
53.5W x 14D x 34.75H in.
Shown on pages: 157 and 158



2062-933 Penelope Desk
60W x 30D x 30H in.
Shown on pages: 276 and 277



2063-950 Calypso Round Spot Table
16 diameter x 22H in.
Shown on page: 252



2064-951 Sulu Sea Snake
Rectangular Spot Table
20W x 12D x 22H in.
Shown on page: 254



2066-955 Corrina Spot Table
18W x 12D x 20H in.
Shown on page: 253



2067-951 Leo Spot Table
12.5W x 16.25D x 25H in.
Shown on page: 248



2067-955 Leo Small Nest Table
22.5W x 14.75D x 23H in.
Shown on pages: 249



2067-956 Leo Large Nest Table
26W x 18D x 27H in.
Shown on pages: 249



2077-945C Precept Rectangular Cocktail
60W x 38D x 18H in.
Shown on pages: 220 and 221



2077-947C Precept Square Cocktail
44W x 44D x 18H in.
Shown on page: 220



2077-950C Precept Round End Table
26 diameter x 24H in.
Shown on pages: 220 and 221



2077-957C Precept Square End Table
25W x 25D x 24H in.
Shown on page: 223



2077-966C Precept Console
62W x 16D x 32H in.
Shown on pages: 222 and 223



2080-870-56C Greta Dining Table
with Glass Top
56 diameter x 30H in.
Shown on pages: 20 and 21



2080-945 Greta Rectangular Cocktail
44W x 24D x 19H in.
Shown on pages: 202 and 203



2080-950 Greta Round Spot Table
14 diameter x 19H in.
Shown on pages: 204 and 205



2080-951 Greta Large Round Spot Table
18 diameter x 23.5H in.
Shown on pages: 204 and 205



2080-955 Greta Rectangular End Table
26W x 18D x 25.25H in.
Shown on pages: 202 and 203



2085-870C Iteration Round Dining Table
48 diameter x 30H in.
Shown on pages: 34 and 35



2085-880-01 Iteration Side Chair
Standard fabric 153711
2085-880 Iteration Side Chair
Lexington fabrics and leathers and COM
23.25W x 26.5D x 40H in.
Seat 20.25W x 18D x 20H in.
Shown on pages: 34 and 35



2086-881-01 Riley Arm Chair
Standard fabric 153713
Shown on page: 11
2086-881 Riley Arm Chair
Lexington fabrics and leathers and COM
25W x 26.5D x 38H in.
Arm 25H in. Seat 19W x 19D x 19H in.
Shown in fabric 0125-31 on pages: 10 and 11



2087-880-01 Melody Side Chair
Standard fabric 153711
2087-880 Melody Side Chair
Lexington fabrics and leathers and COM
22W x 24.75D x 37.5H in.
Seat 20W x 19D x 19.5H in.
Shown on pages: 20, 22, 25, 27 and 274



2087-895-01 Melody Counter Stool
Standard fabric 153711
2087-895 Melody Counter Stool
Lexington fabrics and leathers and COM
22W x 24.25D x 40.5H in.
Seat 21W x 21D x 24H in.
Shown on page: 27



2089-881-01 Raconteur Arm Chair
Standard fabric 153711
2089-88 Raconteur Arm Chair
Lexington fabrics and COM
27W x 29D x 37H in.
Arm 25.75H in. Seat 21.25W x 19.5D x 19H in.
Shown on pages: 36 and 37



2097-945 Zephyr Rectangular Cocktail Table
48W x 36D x 17H in.
Shown on page: 206



2097-957 Zephyr Square End Table
25W x 25D x 25H in.
Shown on page: 206



2097-966 Zephyr Console
54W x 18D x 36H in.
Shown on pages: 206 and 207



2101-895-01 Arne Counter Stool
Standard fabric 430371
2101-895 Arne Counter Stool
Lexington fabrics and leathers and COM
25W x 25.5D x 36H in.
Seat 22W x 19D x 24H in.
Shown on page: 16



2101-896-01 Arne Barstool
Standard fabric 430371
2101-896 Arne Barstool
Lexington fabrics and leathers and COM
25W x 25.5D x 42H in.
Seat 22W x 19D x 30H in.
Shown on page: 16



2101-897-01 Arne Low Back Counter Stool
Standard fabric 430371
2101-897 Arne Low Back Counter Stool
Lexington fabrics and leathers and COM
21.5W x 22.5D x 28H in.
Seat 19.75W x 19D x 24H in.
Shown on page: 17



2101-898-01 Arne Low Back Barstool
Standard fabric 430371
2101-898 Arne Low Back Barstool
Lexington fabrics and leathers and COM
21.5W x 22.5D x 34H in.
Seat 19.75W x 19D x 24H in.
Shown on page: 17



2102-895-01 Viggo Counter Stool
22.5W x 23.5D x 37.5H in.
Seat 21W x 18.5D x 24H in.
Shown on page: 42



2102-896-01 Viggo Barstool
22.5W x 23.5D x 43.5H in.
Seat 21W x 18.5D x 30H in.
Shown on pages: 42 and 43



2104-870C Beale Round Dining Table
50 inch diameter x 30H in.
Shown on pages: 38 and 39



2104-880-01 Beale Low Back Side Chair
Standard fabric 427171
2104-880 Beale Low Back Side Chair
Lexington fabrics and leathers and COM
21.75W x 26D x 36.5H in.
Seat 21W x 20D x 20H in.
Shown on page: 38



2104-895-01 Beale Low Back Counter Stool
Standard fabric 427171
2104-895 Beale Low Back Counter Stool
Lexington fabrics and leathers and COM
19W x 21.5D x 31.5H in.
Seat 17W x 19D x 24H in.
Shown on page: 40



2104-896-01 Beale Low Back Barstool
Standard fabric 427171
2104-896 Beale Low Back Barstool
Lexington fabrics and leathers and COM
19W x 21.5D x 37.5H in.
Seat 17W x 19D x 30H in.
Shown on pages: 40 and 41



2106-895-01 Fuente Swivel Counter Stool
Standard fabric 223571
2106-895 Fuente Swivel Counter Stool
Lexington fabrics and leathers and COM
25.75W x 21.75D x 32.75H in.
Seat 19W x 18.5D x 24.5H in.
Shown on page: 15



2106-896-01 Fuente Swivel Barstool
Standard fabric 223571
2106-896 Fuente Swivel Barstool
Lexington fabrics and leathers and COM
25.75W x 21.75D x 38.75H in.
Seat 19W x 18.5D x 30.5H in.
Shown on page: 15



2117-945 Chiavari Rectangular Cocktail Table
44W x 33D x 19.5H in.
Shown on pages: 228 and 229



2117-957 Chiavari Square End Table
25W x 25D x 26H in.
Shown on pages: 228 and 229



2117-966 Chiavari Console
48W x 16D x 36H in.
Shown on pages: 230 and 231



2119-907 Gradient Media Console/Buffer
68W x 17D x 34H in.
Shown on pages: 56 and 57



2119-908 Gradient Long Media Console
101.5W x 17D x 34H in.
Shown on pages: 58 and 59



2119-973 Gradient Three Drawer Hall Chest
36W x 18D x 34H in.
Shown on pages: 60 and 61



2120-967 Dalliance Console
33.5W x 15D x 38H in.
Shown on pages: 176 and 177



2121-967 Lilt Console
48W x 14D x 38H in.
Shown on pages: 234 and 235



2127-951 Isabella Rectangular Spot Table
19W x 14D x 21H in.
Shown on pages: 264 and 265



2128-945 Soiree Rectangular Cocktail Table
48W x 36D x 18H in.
Shown on page: 182



2128-955 Soiree Rectangular End Table
26W x 22D x 26H in.
Shown on page: 183



2128-967 Sairée Console
60W x 16 x 37H in.
Shown on page: 183



2128-989 Soiree Low Bookcase
56W x 16D x 41H in.
Shown on pages: 184 and 185



2128-990 Soiree Etagere
40W x 18D x 88H in.
Shown on pages: 186 and 187



2129-945C Cortona Rectangular Cocktail Table
with Glass Top
54W x 38D x 19.25H in.
Shown on page: 224



2129-955C Cortona End Table with Glass Top
22W x 26D x 26H in.
Shown on page: 225



2129-967C Cortona Console with Glass Top
53.5W x 16D x 36.5H in.
Shown on page: 225



2132-945 Cirro Rectangular Cocktail Table
50W x 30D x 18H in.
Shown on pages: 198 and 199



2132-953 Cirro Round End Table
25W x 25D x 26H in.
Shown on page: 199



2133-950 Demetria Spot Table
18.25W x 12D x 23.25H in.
Shown on pages: 266 and 267



2134-951 Isidora Turquoise Spot Table
12 inch diameter x 22H in.
Shown on page: 253



2135-945 Topa Rectangular Cocktail Table
54W x 33D x 19H in.
Shown on page: 208



2135-955 Topa Rectangular End Table
26W x 22D x 25H in.
Shown on page: 209



2135-967 Topa Console
66W x 16D x 34H in.
Shown on pages: 209 and 210



2135-991 Topa Etagere
40W x 16D x 88H in.
Shown on pages: 208 and 211



2140-222 Zeitgeist White Double Dresser
54W x 22D x 35H in.
Shown on pages: 74 and 75



2140-907 Zeitgeist White Media Console
54W x 22D x 35H in.
Shown on page: 74



2140-973 Zeitgeist White Drawer Hall Chest
36W x 20D x 35H in.
Shown on pages: 76 and 77



2140-974 Zeitgeist White Hall Door Chest
36W x 20D x 35H in.
Shown on pages: 78 and 79



2141-222 Zeitgeist Linen Double Dresser
54W x 22D x 35H in.
Shown on pages: 82 and 83



2141-907 Zeitgeist Linen Media Console
54W x 22D x 35H in.
Shown on page: 83



2141-945 Zeitgeist Linen Rectangular Cocktail Table
54W x 30D x 18H in.
Shown on page: 172



2141-952 Zeitgeist Linen Hexagon End Table
22.5W x 26D x 26H in.
Shown on pages: 172 and 173



2141-966 Zeitgeist Linen Console
54W x 12D x 36H in.
Shown on pages: 174 and 175



2141-972 Zeitgeist Linen Demilune Hall Chest
33W x 17D x 36.5H in.
Shown on pages: 88 and 89



2141-973 Zeitgeist Linen Drawer Hall Chest
36W x 20D x 35H in.
Shown on pages: 84 and 85



2141-974 Zeitgeist Linen Hall Door Chest
36W x 20D x 35H in.
Shown on pages: 86 and 87



2145-945 Aristo Rectangular Cocktail Table
44.5W x 26D x 18
Shown on pages: 200 and 201



2145-953 Aristo Clover End Table
26W x 24.5D x 23H in.
Shown on page: 201



2146-881-01 Riley Woven Arm Chair
Standard fabric 223571
Shown on page: 12
2146-881 Riley Woven Arm Chair
Lexington fabrics and leathers and COM
25W x 26.5D x 38H in.
Arm 25H in.
Seat 19W x 19D x 19H in.



2149-907 Logan Convertible
Long Media Console/Buffer
107.5W x 17D x 26-30H in.
Shown on pages: 54 and 55



2150-907 Monstuart
Long Media Console/Buffer
99W x 18D x 36H in.
Shown on pages: 90 and 91



2154-953 Alfie Round End Table
28 inch diameter x 26H in.
Shown on pages: 192 and 193



2155-870C Capiz Round Dining Table
48 inch diameter x 30H in.
Shown on pages: 28 and 29



2155-943 Capiz Round Cocktail
36 inch diameter x 19H in.
Shown on pages: 140 and 141



2155-950 Capiz Round End Table
26 diameter x 24.5H in.
Shown on page: 140



2156-933C Cumulus Capiz Writing Table
48W x 26D x 30H in.
Shown on pages: 270 and 271



2156-941C Cumulus Capiz
Large Round Cocktail Table
50 inch diameter x 18.5H in.
Shown on page: 142



2156-943C Cumulus Capiz Round Cocktail Table
41 inch diameter x 18.5H in.
Shown on page: 143



2156-945C Cumulus Capiz
Rectangular Cocktail Table
44W x 30D x 18.5H in.
Shown on page: 145



2156-949C Cumulus Capiz
Large Rectangular Cocktail Table
60W x 40D x 18.5H in.
Shown on page: 144



2156-955C Cumulus Capiz Tier Table
24W x 16D x 24H in.
Shown on pages: 143 and 146



2156-958 Cumulus Capiz Triangular Tier Table
25.25W x 16D x 26H in.
Shown on pages: 145 and 147



2157-953 Marlowe Round End Table
28 inch diameter x 26H in.
Shown on pages: 232 and 233



2158-870-56C Heller Round Dining Table
with Glass Top
56 diameter x 30H in.



2158-870-60C Heller Round Dining Table with Glass Top
60 diameter x 30H in.
Shown on page: 10



2158-877C Heller Rectangular Dining Table
100W x 48D x 30H in.
Shown on pages: 6, 8 and 9



2158-945 Heller Rectangular Cocktail Table
60W x 36D x 18H in.
Shown on pages: 190 and 191



2159-955 Otto Round Spot Table
15W x 18.75D x 27H in.
Shown on page: 248



2161-870-56C Rainer Round Dining Table with Glass Top
56 inch diameter x 29.5H in.
Shown on page: 13



2161-870-60C Rainer Round Dining Table with Glass Top
60 inch diameter x 29.5H in.



2161-870-88C Rainer Rectangular Dining Table with Glass Top
88W x 48D x 30H in.
Shown on page: 14



2173-949C Brillante Small Cocktail Table
42W x 26D x 19.25H in.
Shown on page: 132



2173-951 Brillante Spot Table
20W x 10.5D x 26H in.
Shown on pages: 134 and 135



2173-966 Brillante Console
48W x 9D x 36H in.
Shown on page: 133



2174-945 Treville Rectangular Cocktail Table
48W x 36D x 18H in.
Shown on page: 226



2174-953 Treville Round End Table
26 diameter x 25H in.
Shown on pages: 226 and 227



2174-966 Treville Console
54W x 16D x 36H in.
Shown on page: 227



2176-951C Huxley Rectangular Spot Table
24W x 20D x 24H in.
Shown on page: 240



2177-950 Moriarty Spot Table
15W x 15D x 23H in.
Shown on page: 241



2178-950 Pascal Round Spot Table
18 inch diameter x 23.5H in.
Shown on page: 241



2179-952 Clement Oval Spot Table
21W x 16.25D x 25H in.
Shown on page: 243



2180-950 Catalan Oval Drum Table
15.25W x 11.5D x 24.5H in.
Shown on page: 242



2181-945C Apricity Rectangular Cocktail Table
60W x 32D x 18.5H in.
Shown on page: 159



2182-951 Bora Black Spot Bunching Table
14W x 14D x 18.5H in.
Shown on page: 262



2183-951 Bora White Spot Bunching Table
14W x 14D x 18.5H in.
Shown on page: 263



2184-951 Clarence Round Spot Table
16 inch diameter x 23H in.
Shown on page: 244



2185-951 Michel Rectangular Tray Spot Table
12W x 24D x 25.5H in.
Shown on page: 246



2186-951 Repartee Round Spot Table
16 inch diameter x 25.25H in.
Shown on page: 246



2189-950 Mimi Round Spot Table
14 inch diameter x 18.5H in.
Shown on page: 247



2190-951 Salvo Rectangular Tier Spot Table
14W x 22.5D x 23H in.
Shown on page: 247



2201-881-01 Juliet Arm Chair with Casters
Standard fabric: 222111
2201-881 Juliet Arm Chair with Casters
Lexington fabrics and leathers and COM
24.25W x 28D x 41H in.
2201-881-01 Shown on page: 9
2201-881 Shown in fabric 2204-31 on page: 8



2202-945 Ascension Rectangular Cocktail Table
54W x 27D x 19H in.
Shown on pages: 120 and 121



2202-950 Ascension Spot Table
26 inch diameter x 25H in.
Shown on pages: 122 and 123



2202-955 Ascension Rectangular End Table
18W x 27D x 26H in.
Shown on page: 125



2202-966 Ascension Console
53W x 18D x 36H in.
Shown on pages: 124 and 125



2202-973 Ascension Hall Chest
36W x 18D x 38H in.
Shown on pages: 102 and 103



2203-945 Iridium Rectangular Cocktail Table
56W x 30D x 17H in.
Shown on page: 108



2203-953 Iridium Round End Table
26 inch diameter x 25H in.
Shown on page: 109



2203-966 Iridium Console
54W x 12D x 36H in.
Shown on pages: 110 and 111



2203-973 Iridium Hall Chest
42W x 18D x 37.5H in.
Shown on pages: 70 and 71



2204-945 Metropole Rectangular Cocktail Table
54W x 30D x 18H in.
Shown on pages: 126 and 127



2204-955 Metropole Rectangular End Table
27W x 18D x 26H in.
Shown on pages: 126, 128 and 129



2204-957 Metropole Square End Table
24W x 24D x 25H in.
Shown on page: 126



2204-966 Metropole Console
32W x 12D x 36H in.
Shown on pages: 130 and 131



2205-950 Invicta Round Spot Table
16 inch diameter x 26H in.
Shown on pages: Front cover and 238



2205-973 Invicta Hall Chest
42W x 20D x 36H in.
Shown on pages: Front cover, 62 and 63



2206-950 Touché Rectangular Spot Table
18W x 12D x 25H in.
Shown on page: 238



2207-950 Litmus Rectangular Spot Table
24W x 18D x 25H in.
Shown on page: 238



2208-907 Metaphor Media Console
68W x 17D x 32H in.
Shown on pages: 46 and 47



2208-908 Metaphor Long Media Console
100.5W x 17D x 32H in.
Shown on pages: 48 and 49



2208-943C Metaphor Round Cocktail Table
44 inch diameter x 17H in.
Shown on page: 169



2208-955C Metaphor Round End Table
24 inch diameter x 26H in.
Shown on page: 169



2208-966C Metaphor Console
54W x 12D x 34.5H in.
Shown on pages: 170 and 171



2208-973 Metaphor Hall Chest
42W x 20D x 35.25H in.
Shown on pages: 50 and 51



2210-945 Foray Rectangular Cocktail Table
54W x 30D x 17.5H in.
Shown on page: 218



2210-955 Foray Rectangular End Table
22W x 26D x 26H in.
Shown on pages: 218 and 219



2210-966 Foray Console
54W x 10D x 36H in.
Shown on page: 219



2211-947C Accolade Square Cocktail Table
44W x 44D x 17.5H in.
Shown on page: 214



2211-955C Accolade Rectangular End Table
27W x 25D x 25H in.
Shown on page: 215



2211-966 Accolade Console
64W x 12D x 35.75H in.
Shown on pages: 216 and 217



2212-907 Viscount Media Console
79W x 17D x 34H in.
Shown on pages: 100 and 101



2213-945C Sashay Silver Rectangular Cocktail Table
54W x 26D x 17.5H in.
Shown on page: 178



2213-955C Sashay Silver Rectangular End Table
16W x 24D x 25H in.
Shown on pages: 178 and 179



2213-966C Sashay Silver Console
66W x 10D x 34H in.
Shown on page: 180



2213-990C Sashay Silver Slim Etagere
18W x 12D x 80H in.
Shown on pages: 178 and 181



2214-945 Sashay Gold Rectangular Cocktail Table
54W x 26D x 18.25H in.
Shown on page: 160



2214-955 Sashay Gold Rectangular End Table
16W x 24D x 25.75H in.
Shown on pages: 160 and 161



2214-966 Sashay Gold Console
66W x 10D x 34.75H in.
Shown on page: 162



2214-990 Sashay Gold Slim Etagere
18W x 12D x 80H in.
Shown on pages: 160 and 163



2241-945 Canto Rectangular Cocktail Table
54W x 28D x 17H in.
Shown on page: 212



2241-955C Canto End Table
27W x 18D x 25H in.
Shown on page: 212



2241-966 Canto Console
64W x 14D x 34H in.
Shown on page: 213



2243-950 Bello Round Spot Table
18 diameter x 21H in.
Shown on page: 239



2243-951 Bello Faceted Drum Table
18.25 diameter x 21.75H in.
Shown on page: 239



2247-950 Thornton Side Table
25W x 18D x 24H in.
Shown on page: 243



2248-950 Vega Round Spot Table
16 inch diameter x 25H in.
Shown on page: 245



2249-950 Barolo Spot Table
12 inch diameter x 24H in.
Shown on page: 242



2250-945 Everest Rectangular Cocktail Table
49.25W x 26D x 19H in.
Shown on page: 194



2250-950 Everest Square Spot Table
14.75W x 14.75D x 25H in.
Shown on pages: 194 and 195



2250-966 Everest Console
57W x 14.5D x 36H in.
Shown on pages: 196 and 197



2251-950 Wilder Oval Spot Table
22W x 13D x 24H in.
Shown on page: 244



2252-950 Montreaux Spot Table
12W x 12D x 24H in.
Shown on page: 240



2253-950 Ergo Marble and Metal
Tiered Hexagonal End Table
19.5W x 11.5D x 25.5H in.
Shown on page: 245



2267-907 Elation Media Console
68W x 17D x 30H in.
Shown on pages: 66 and 67



2267-908 Elation Long Media Console
99.5W x 17D x 30H in.
Shown on pages: 68 and 69



2267-947 Elation Square Cocktail Table
48W x 48D x 16H in.
Shown on page: 114



2267-966 Elation Console
72W x 12D x 36H in.
Shown on pages: 116, 117 and 118



2267-973 Elation Hall Chest
42W x 20D x 36H in.
Shown on pages: 64 and 65



2268-907 Elation Media Console
68W x 17D x 30H in.
Four doors, 4 adjustable shelves, ventilated back
Shown on page: 66



2268-908 Elation Long Media Console
99.5W x 17D x 30H in.
Shown on page: 69



2268-947 Elation Square Cocktail Table
48W x 48D x 16H in.
Shown on page: 115



2268-966 Elation Console
72W x 12D x 36H in.
Shown on page: 119



2268-973 Elation Hall Chest
42W x 20D x 36H in.
Shown on page: 65

FURNITURE CARE:

- Avoid prolonged exposure to direct sunlight.
- Do not leave plastic or rubber materials on wood surfaces.
- Wipe up spills immediately.
- Clean with a non-silicone furniture polish, rubbing with the grain.
- Avoid common hazards such as hot dishes (use a protective pad), harsh solvents (nail polish remover, alcohol) and abrasives.

STONE AND METAL CARE:

- Maintain with regular dusting.
- Wipe spills immediately.
- Never set drinks or liquids directly on wood, metal or stone surfaces.

UPHOLSTERY CARE:

- See your Artistica Upholstery dealer, visit www.artisticahome.com, or call 336.474.5300, ext. 2.
- Never remove cushion covers for cleaning.
 - Never use bleach or any tumble method of cleaning.

CONSTRUCTION NOTE:

In order to provide our customers with the best possible quality and value, this collection includes items or components produced outside the United States.

NOTE TO FURNITURE RETAILERS:

Possession of this catalog does not constitute authority to purchase, and the furnishing of this catalog does not constitute an offer by the Company to sell any of the items contained herein. Artistica reserves the right to alter specifications or discontinue items at any time without advance notice. All price lists and catalogs remain the property of Artistica and may not be copied or in any way duplicated without the express written consent of Artistica and must be returned, or made available, without cost, to Artistica promptly should the relationship be terminated by either party. Failure to observe this restriction may result in termination, legal action or both.

FIND US ON THE WEB:

facebook.com/artisticahome
instagram.com/artisticahome



SIGNATURE DESIGNS

artisticahome.com

A division of Lexington Home Brands

©Copyright 2021 Lexington Home Brands
HPS-4M-2/21



— SIGNATURE DESIGNS —



To locate a dealer in your area, visit artisticahome.com
or call 336.474.5300 ext. 2

ARTISTICA
— HOME —

artisticahome.com